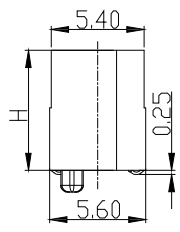
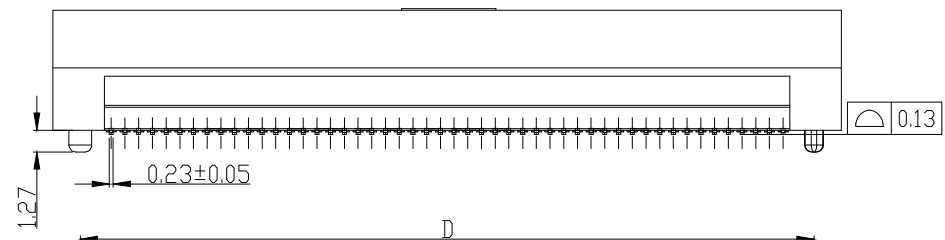
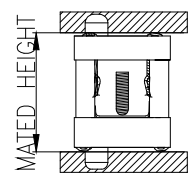
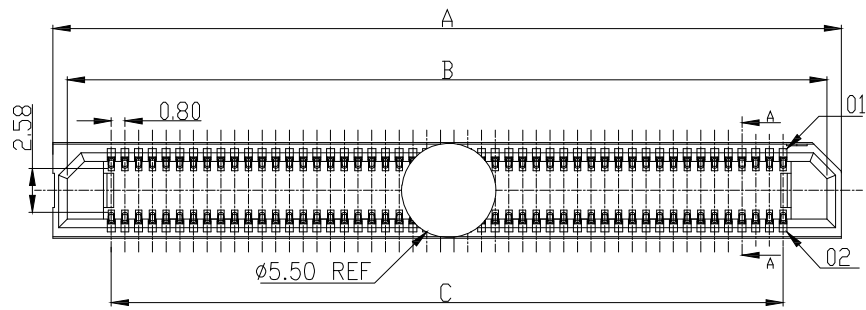


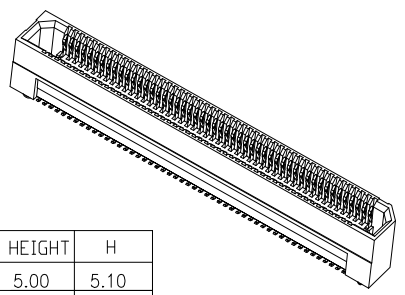
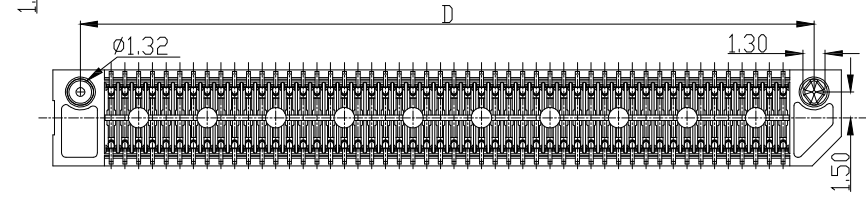
更改 REV	数量内容 MODIFICATION
A	ECXXXX

SPECIFICATIONS  
 1.CURRENT RATING: 1.0A .  
 2.VOLTAGE RATING 300VAC.  
 3.OPERATING TEMPERATURE RANGE:-55°C TO +125°C  
 4.OPERATING HUMIDITY RANGE:90% TO 95%.  
 5.WITHSTANDING VOLTAGE:500 VAC



7BTBF-F0-18XXXXX

50->H:5.0  
 70->H:7.0  
 90->H:9.0

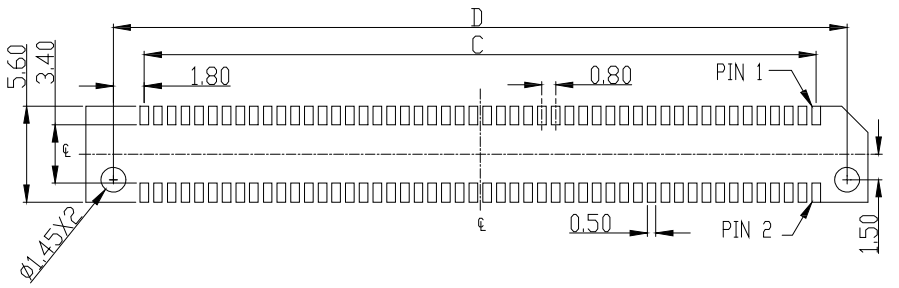


PIN NO:EX-10PIN-010 ; 20PIN-020...

POSITION	A	B	C	D
10	10.00	8.32	3.20	6.80
20	14.00	12.32	7.20	10.80
22	14.80	13.12	8.00	11.60
24	15.60	13.92	8.80	12.40
26	16.40	14.72	9.60	13.20
30	18.00	16.32	11.20	14.80
40	22.00	20.32	15.20	18.80
50	26.00	24.32	19.20	22.80
60	30.00	28.32	23.20	26.80
80	38.00	36.32	31.20	34.80
100	46.00	44.32	39.20	42.80
120	54.00	52.32	47.20	50.80
140	62.00	60.32	55.20	58.80
150	66.00	64.32	59.20	62.80
200	86.00	84.32	79.20	82.00

HEIGHT	H
5.00	5.10
7.00	7.00
9.00	9.00

ERF8 LEAD STYLE	MATED HEIGHT			
	ERM8 LEAD STYLE			
	2.00	5.00	8.00	9.00
5.00	7.00	10.00	13.00	14.00
7.00	9.00	12.00	15.00	16.00
9.00	11.00	14.00	17.00	18.00



Recommended PC board pattern  
(TOP VIEW)

GENERAL TOLERANCE	
X± 0.50	X*± 5 °
.X± 0.30	.X*± 2 °
.XX± 0.20	.XX*± 1 °

KINGCONN 皇海科技股份有限公司  
 名称(TITLE) 0.8 PITCH BTB SOCKET

单位(UNIT) mm	料号(PART NO.) 7BTBF-F0-18XXXXX	图号(DWG NO.) 7BTBF-F0-18XXXXX
审核(APPROVAL)	检查(CHECKED)	制图(DRAWN)
比例(SCALE) 1:1	张数(SHEET) 1/1	更改(REV) A

