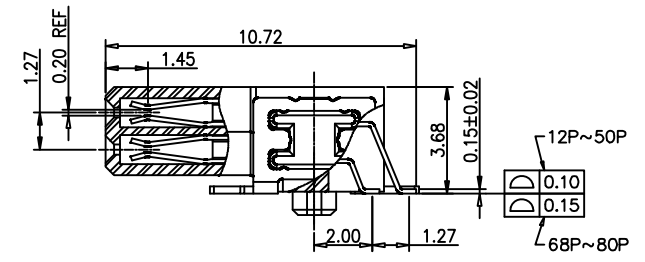
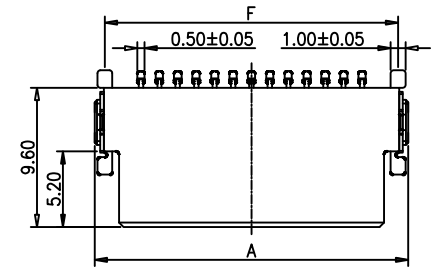
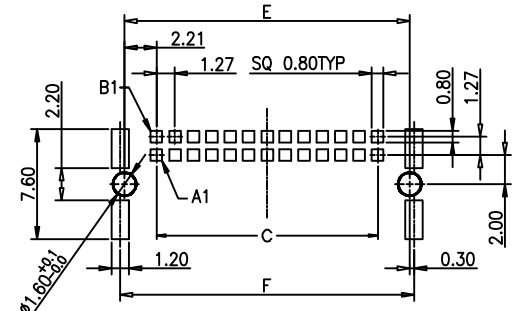
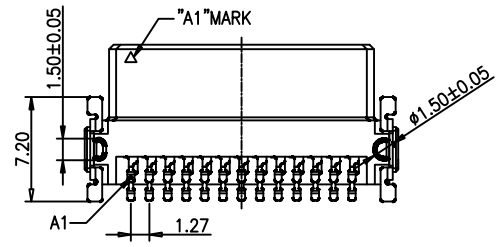
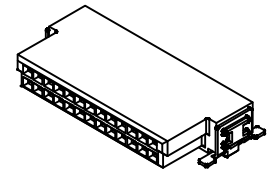
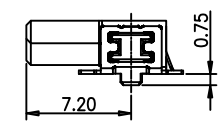
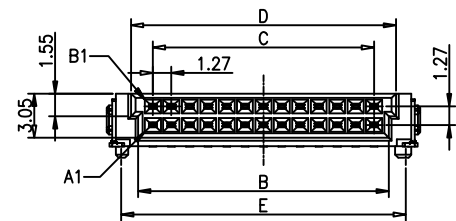


更改 REV	變更內容 MODIFICATION
A	ECXXXXX

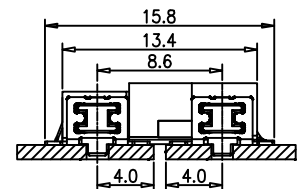
- NOTES:
- FINISH:
    - HOUSING: LCP BLACK,UL94V-0.
    - CONTACT: PHOSPHOR BRONZE, INTEGRAL NICKEL BASE 50u"MIN, GOLD (SEE P/N) PLATED IN CONTACT AREA, 100u" MIN MATTE TIN PLATED IN SOLDER AREA.
    - LOCK: BRASS, 100u" MIN TIN PLATED OVER NICKEL 40u".
  - ELECTRICAL:
    - CURRENT RATING: 1.7AMP.
    - DIELECTRIC WITHSTANDING VOLTAGE: 500V AC
    - INSULATION RESISTANCE: 1000MΩ MIN.
    - CONTACT RESISTANCE: 25mΩ MAX.
  - OPERATION TEMPERATURE:-55°C TO +125°C.



CROSS SECTION  
SCALE 2:1



P.C.B. Layout  
Tolerance: ±0.05



SMC Connector Board To Board  
Mating Length

7BTBF-F0-21127042-XX

PIN NO.(EX:12/16/...80).

Positions	Dimension					
	A	B	C	D	E	F
12	12.70	8.37	6.35	9.37	10.77	11.34
16	15.24	10.91	8.89	11.91	13.31	13.88
20	17.78	13.45	11.43	14.45	15.85	16.42
24	20.32	15.99	13.97	16.99	18.39	18.96
26	21.59	17.26	15.24	18.26	19.66	20.23
30	24.13	19.80	17.78	20.80	22.20	22.77
32	25.40	21.07	19.05	22.07	23.47	24.04
40	30.48	26.15	24.13	27.15	28.55	29.12
50	36.83	32.50	30.48	33.50	34.90	35.47
68	48.26	43.93	41.91	44.93	46.33	46.90
80	55.88	51.55	49.53	52.55	53.95	54.52

GENERAL TOLERANCE		KINGCONN 皇海科技股份有限公司
X± 0.50	X*± 5°	
.X± 0.30	.X*± 2°	
.XX± 0.20	.XX*± 1°	名 稱/TITLE B TO B FEMALE 彎角PH:1.27
單 位(UNIT) mm	料 號(PART NO.) 7BTBF-F0-21127042-XX	圖 號(DWG NO.) 7BTBF-F0-21127042-XX
審 核(APPROVAL)	檢 核(CHECKED)	製 圖(DRAWN)
		比 例 SCALE 1:1
		張 數 SHEET 1/1
		更 改 REV A

