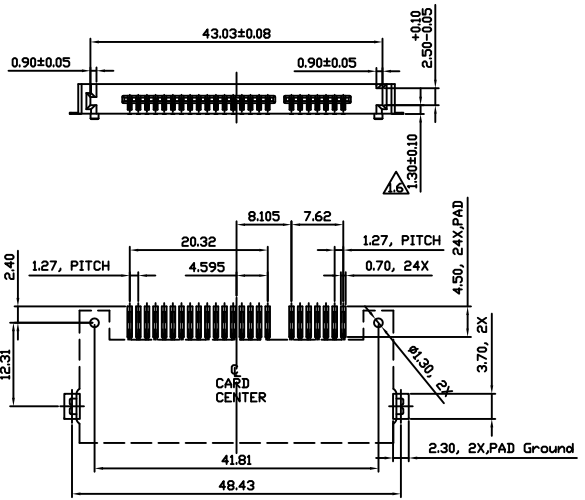
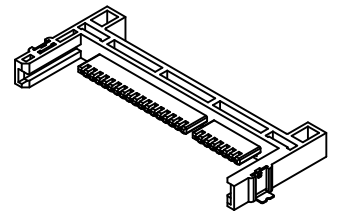
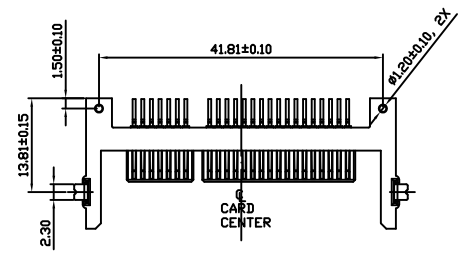
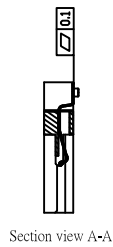
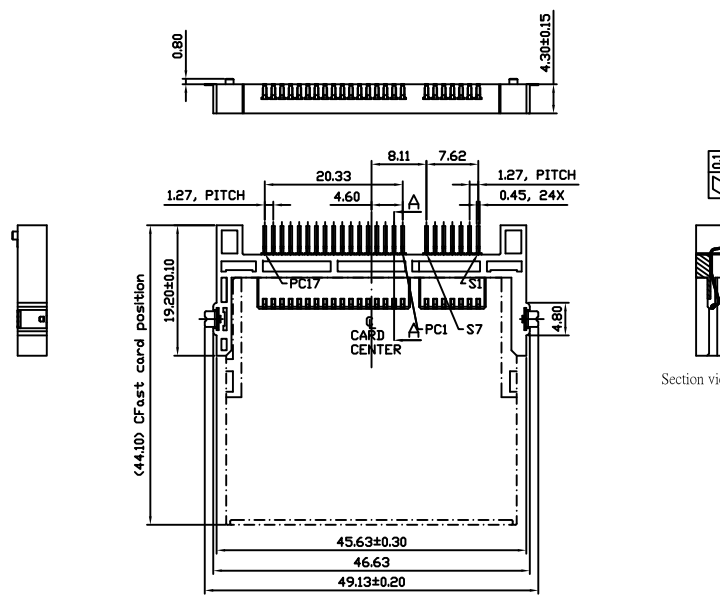


更改 REV	规格内容 MODIFICATION
A	ECXXXX



TOLERANCE: ±0.05
RECOMMENDED P.C.B LAYOUT

- NOTES: 1. MATERIAL:
 1-1 Housing : Engineering plastic , LCP with G.F reinforced , black per UL 94V-0 rate.
 1-2 Terminal : Phosphor Bronze , per JIS 5210 , 0.2t
 2. PLATING:
 2-1 CONTACTS: 0.25 μm (10 μ") gold plating in contact area.and 2.54 μm (100 μ") min. matte Tin in soldering zone, over entire contact underplated with 1.27 μm (50 μ") min. Nickel over all.
 2-2 Solder zone: 2.54 μm (100 μ") matte Tin, 1.27 μm (50 μ") min. Nickel underplating over all.
 3. RoHS compliant products.
 4. Working temperature: -40°C~+85°C

GENERAL TOLERANCE		KINGCONN 皇海科技股份有限公司
X± 0.50	X*± 5 °	
.X± 0.30	.X*± 2 °	
.XX± 0.20	.XX*± 1 °	名称(TITLE) Cfast host_4.3H簡易型(短腳1)
單位(UNIT)	料號(PART NO.)	圖號(DWG NO.)
mm	7CFST-CA-0029	7CFST-CA-0029-A
審核(APPROVAL)	核對(CHECKED)	製圖(DRAWN)
		比例 SCALE 1:1
		張數 SHEET 1 / 1
		更改 REV A

