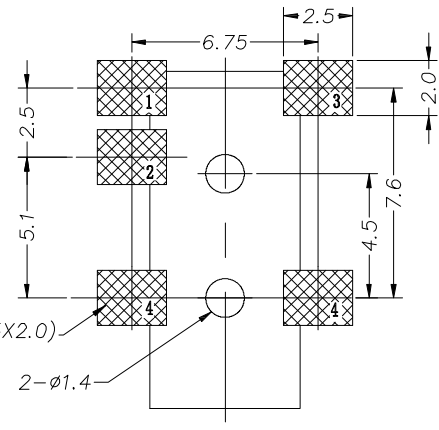
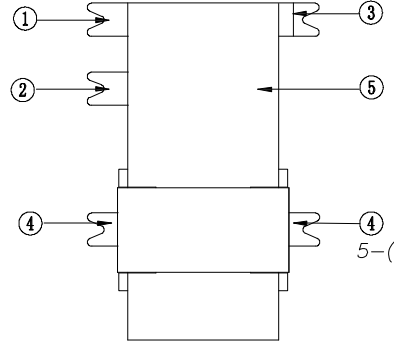
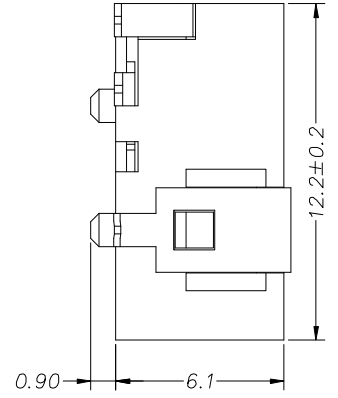
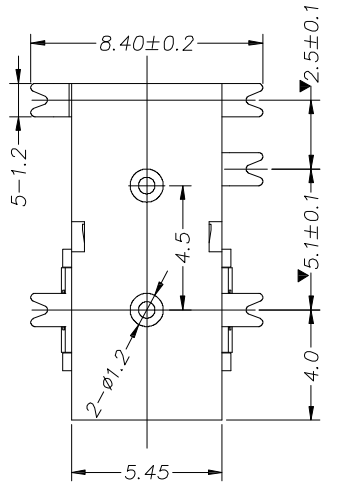
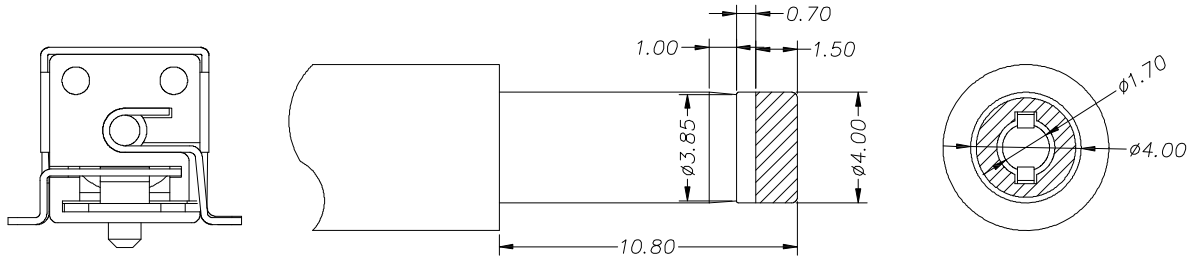


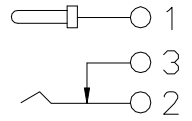
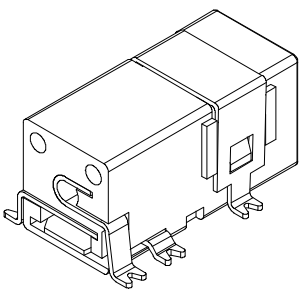
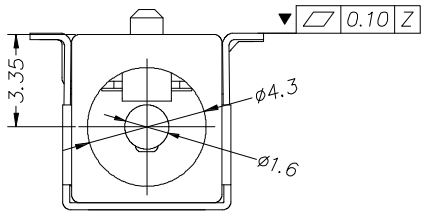
SPECIFICATION

- 1.Rating:DC 30V 1.0A;
- 2.Contact resistance:  $\leq 30m\Omega$ ;
- 3.Insulation resistance: $\geq 100m\Omega$ ;
- 4.Withstand voltage:500VAC;
- 5.Insertion and extraction force: 3-30 N;
- 6.Operating Temperature:-30 C~70 C;
- 7.Life test:5,000 cycles.

更改 REV	变更内容 MODIFICATION
A	EC06520
B	EC07008



P. C. B LAYOUT TOP VIEW



CIRCUIT DIAGRAM

⑤	HOUSING	HIGH TEMPERATURE RESISTANT PLASTIC
④	TERMINAL	COPPER ALLOY
③	TERMINAL	COPPER ALLOY
②	TERMINAL	COPPER ALLOY
①	TERMINAL	COPPER ALLOY
No.	PART NAME	MATERIAL

GENERAL TOLERANCE		KINGCONN 皇海科技股份有限公司	
X± 0.50	X*± 5 °	名 稱/TITLE DC JACK SMT	
.X± 0.30	.X*± 2 °		
.XX± 0.20	.XX*± 1 °		
單 位(UNIT) mm	料 號(PART NO.) 7DCJK-F0-0024	圖 號(DWG NO.) 7DCJK-F0-0024	
審 核(APPROVAL)	核 對(CHECKED)	製 圖(DRAWN)	比 例 SCALE 1:1
			張 數 SHEET 1/1
			更 改 REV B

