

更改 REV	变更记录 MODIFICATION
A	ECXXXX

1.MATERIAL:
 INSULATOR: PBT + 30% GLASS FIBER UL94V-0
 TERMINAL: COPPER ALLOY
 GOLD ON CONTACT AREA AND TIN ON SOLDER TAIL
 NICKEL PLATING ON BASE.

SEHLL: SPCC WITH NICKEL PLATING
 GROUNDING CLIP: SPCC WITH TIN PLATING
 SCREW: SPCC WITH NICKEL PLATING

2.ELECTRICAL:
 INSULATOR RESISTANCE: 1000MEGOHMS MIN. 500V DC.
 DIELECTRIC WITHSTANDING VOLTAGE: 500V DC R.M.S
 VOLTAGE TATING: 40V AC (RMS) CONTINUOUS MAX.
 CURRENT RATING: 2A MIN.
 CONTGACT RESISTANCE: 25 MILLIOHMS MAX.

3.ENVIRONMENTAL
 TEMPERATURE RANGE:-25°C TO + 85°C.

4.ROHS COMPLIANT.

5.How to order:
 7DSUB-XX-01XXXX

PIN规格
 09: 09Pin
 15: 15Pin
 25: 25Pin
 37: 37Pin

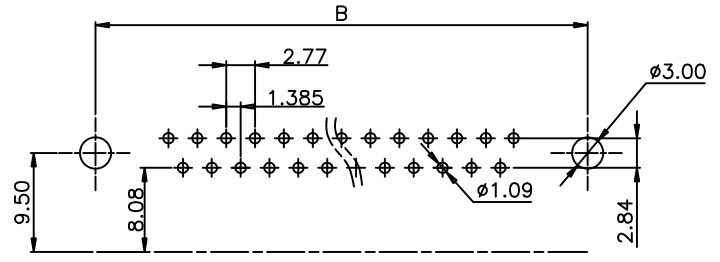
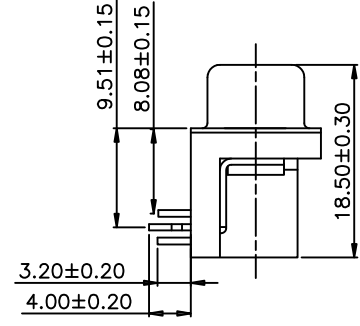
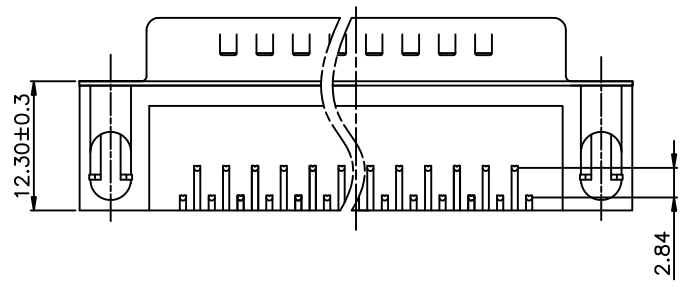
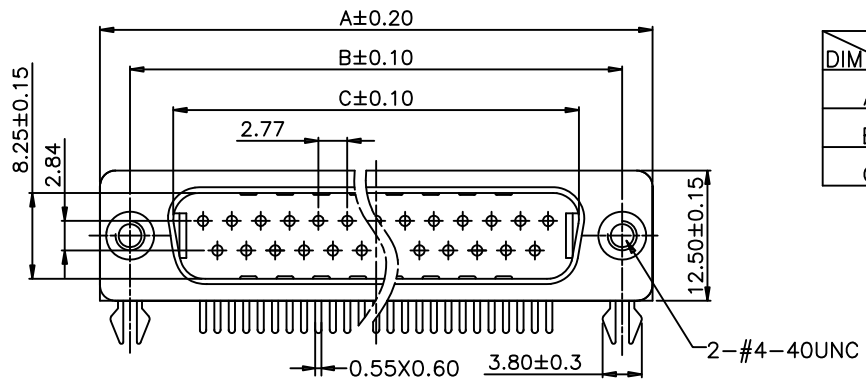
颜色规格
 B:蓝色
 K:黑色
 W:白色
 G:绿色
 Y:黄色

M:公头
 端子规格
 1:半金10u"
 4:半金10u"
 5:半金15u"
 6:半金30u"

Rivet option:

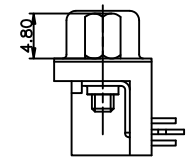
- A:screw assembly type.
- B:Rivet
- C:rivet/screw assemble type.
screw spec:4.75*5.8*13mm
- D:rivet/screw attachment type.
screw spec:4.75*5.8*13mm

DIM \ PIN	DR9P	DR15P	DR25P	DR37P
A	30.80	39.20	53.05	69.40
B	25.00	33.30	47.05	63.50
C	16.90	25.25	38.95	55.40



Recommended P.C.B Layout

Type:A



GENERAL TOLERANCE		KINGCONN 皇海科技股份有限公司	
X± 0.50	X°± 5 °	名 称(TITLE) DR Male 9 PIN	
.X± 0.30	.X°± 2 °		
.XX± 0.20	.XX°± 1 °		
单 位(UNIT) mm	料 号(PART NO.) 7DSUB-K1-01M09A	图 号(DWG NO.) 7DSUB-K1-01M09A	比例(SCALE) 1:1
审 核(APPROVAL)	核 对(CHECKED)	製 图(DRAWND)	张 数(SHEET) 1/1
			更改(REV) A

