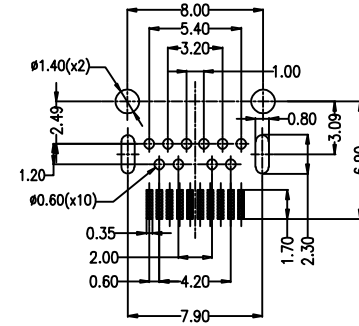
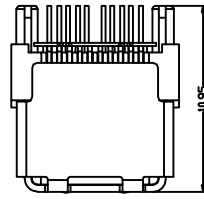


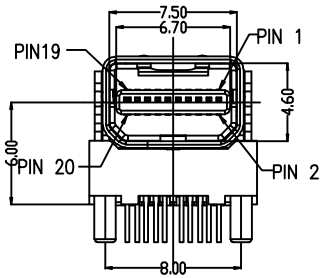
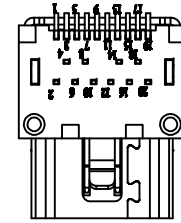
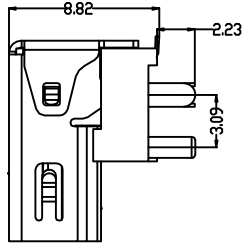
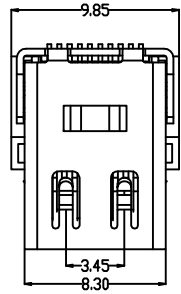
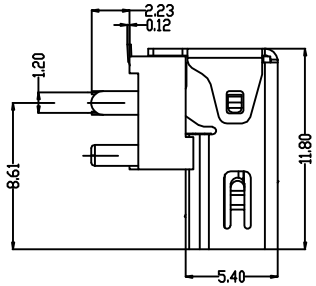
|           |                      |
|-----------|----------------------|
| 更改<br>REV | 最新內容<br>MODIFICATION |
| A         | ECXXXXX              |



P.C.B LAYOUT (T=1.60mm)  
VIEW BOTTOM (tolerance±0.05)

NOTES:

- MATERIL
  - HOUSING:HI-TEMP PLASTIC (UL94-V-0),BLACK
  - CONTACT:COPPER ALLOY(T=0.20),  
PLATING:GOLD PLATED ON CONTACT AREA,  
TIN PLATED ON SOLDER TAILS,UNDER  
NICKEL PLATED.
  - SHELL:BRASS(T=0.40),PLATING:NICKEL PLATED,
  - SPRING SHELL: STAINLESS SUS304 T=0.20mm
  - COVER: HI-TEMP,PLASTIC(UL94V-0)BLACK,
- SPECIFICATION:
  - CURRENT RATING: 0.5 A
  - CONTACT RESISTANCE: 30mΩ MAX.
  - DIELECTRIC WITHSTANDING VOLTAGE: 500V AC  
R.M.S FOR ONE MINUTE.
  - INSULATION RESISTANCE: 100MΩ MIN AT 500V DC.
  - OPERATING TEMPERATURE: -25° TO +85°.
  - DURABILITY: 10000 CYCLES.
  - MATING FORCE: 4.5KG MAX.
  - UNMATING FORCE: 1.0KG MIN



|                   |                               |  |  |
|-------------------|-------------------------------|--|--|
| GENERAL TOLERANCE |                               | KINGCONN 皇海科技股份有限公司                      |  |
| X± 0.50           | X*± 5°                        | 名稱(TITLE)<br>MINI DP FEMALE DIP+SMT TYPE |  |
| .X± 0.30          | .X*± 2°                       |  |  |
| .XX± 0.20         | .XX*± 1°                      |  |  |
| 單位(UNIT)<br>mm    | 料號(PART NO.)<br>7MNDP-F0-0001 | 圖號(DWG NO.)<br>7MNDP-F0-0001             |  |
| 審核(APPROVAL)      | 核對(CHECKED)                   | 製圖(DRAWN)                                | 比例 SCALE 1:1<br>張數 SHEET 1/1<br>更改 REV A |

