

更改 REV	變更內容 MODIFICATION
B	ECN03918
C	ECN04086
D	ECN04116
E	ECN04167

NOTES :

1.MATERIAL :

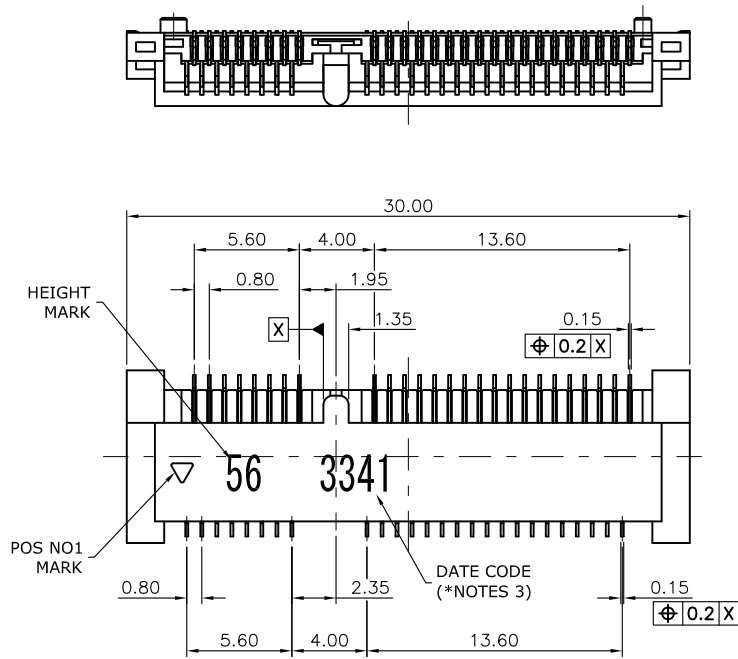
INSULATOR : HIGH TEMPRATURE THERMOPLASTIC,  
UL94V-0, BLACK  
CONTACT : COPPER ALLOY

2.PLATING:

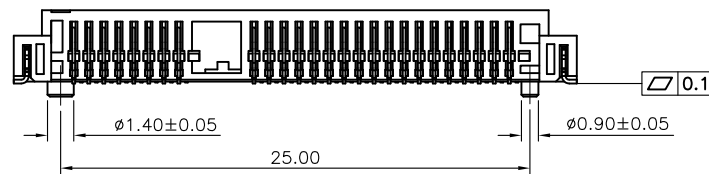
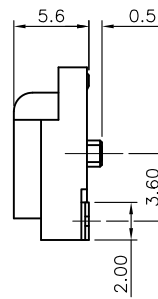
CONTACT AREA : GOLD FLASH PLATED OVER Ni  
SOLDER AREA : Tin PLATED OVER Ni

3.DATE CODE: 3 3 4 1

YEAR 2013      DAY 1 AT WEEK  
WEEK 34

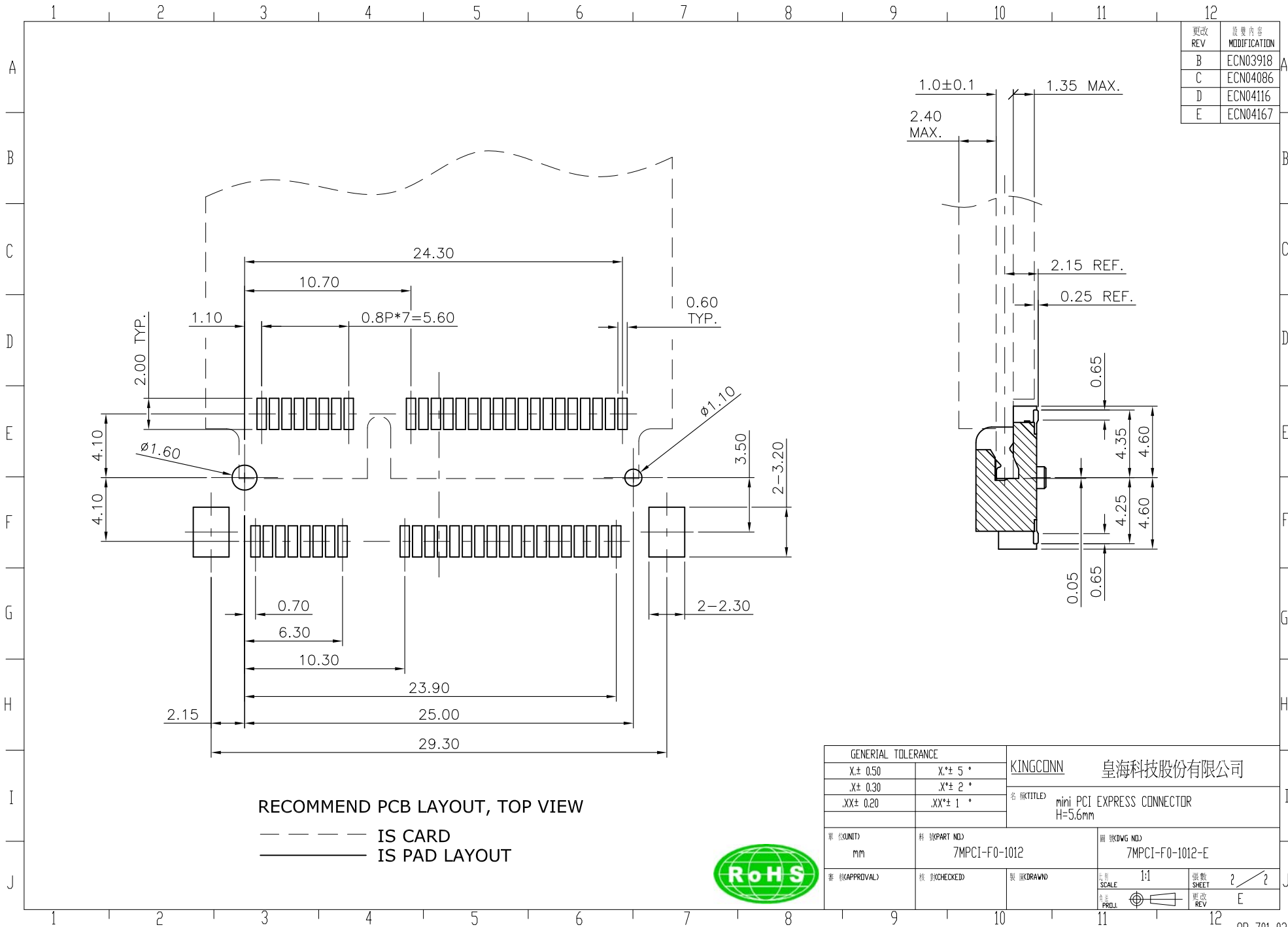


\*SEE TABLE



GENERAL TOLERANCE		KINGCONN 皇海科技股份有限公司	
X $\pm$ 0.50	X* $\pm$ 5°	名稱(TITLE) mini PCI EXPRESS CONNECTOR H=5.6mm	
.X $\pm$ 0.30	.X* $\pm$ 2°		
.XX $\pm$ 0.20	.XX* $\pm$ 1°		
單位(UNIT) mm	料號(PART NO.) 7MPCI-F0-1012	圖號(DWG NO.) 7MPCI-F0-1012-E	
審核(APPROVAL)	核對(CHECKED)	製圖(DRAWN)	比例(SCALE) 1:1 張數(SHEET) 1/2 圖號(FIG.) 更改(REV) E





更改 REV	變更內容 MODIFICATION
B	ECN03918
C	ECN04086
D	ECN04116
E	ECN04167

RECOMMEND PCB LAYOUT, TOP VIEW  
 - - - - - IS CARD  
 \_\_\_\_\_ IS PAD LAYOUT

GENERAL TOLERANCE		KINGCONN 皇海科技股份有限公司	
X± 0.50	X.*± 5°	名稱(TITLE) mini PCI EXPRESS CONNECTOR H=3.6mm	
.X± 0.30	.X.*± 2°		
.XX± 0.20	.XX.*± 1°		
單位(UNIT) mm	料號(PART NO) 7MPCI-F0-1012	圖號(DWG NO) 7MPCI-F0-1012-E	
審核(APPROVAL)	核對(CHECKED)	製圖(DRAWN)	比例(SCALE) 1:1 圖號(SHEET) ?/? 更改(REV) E

