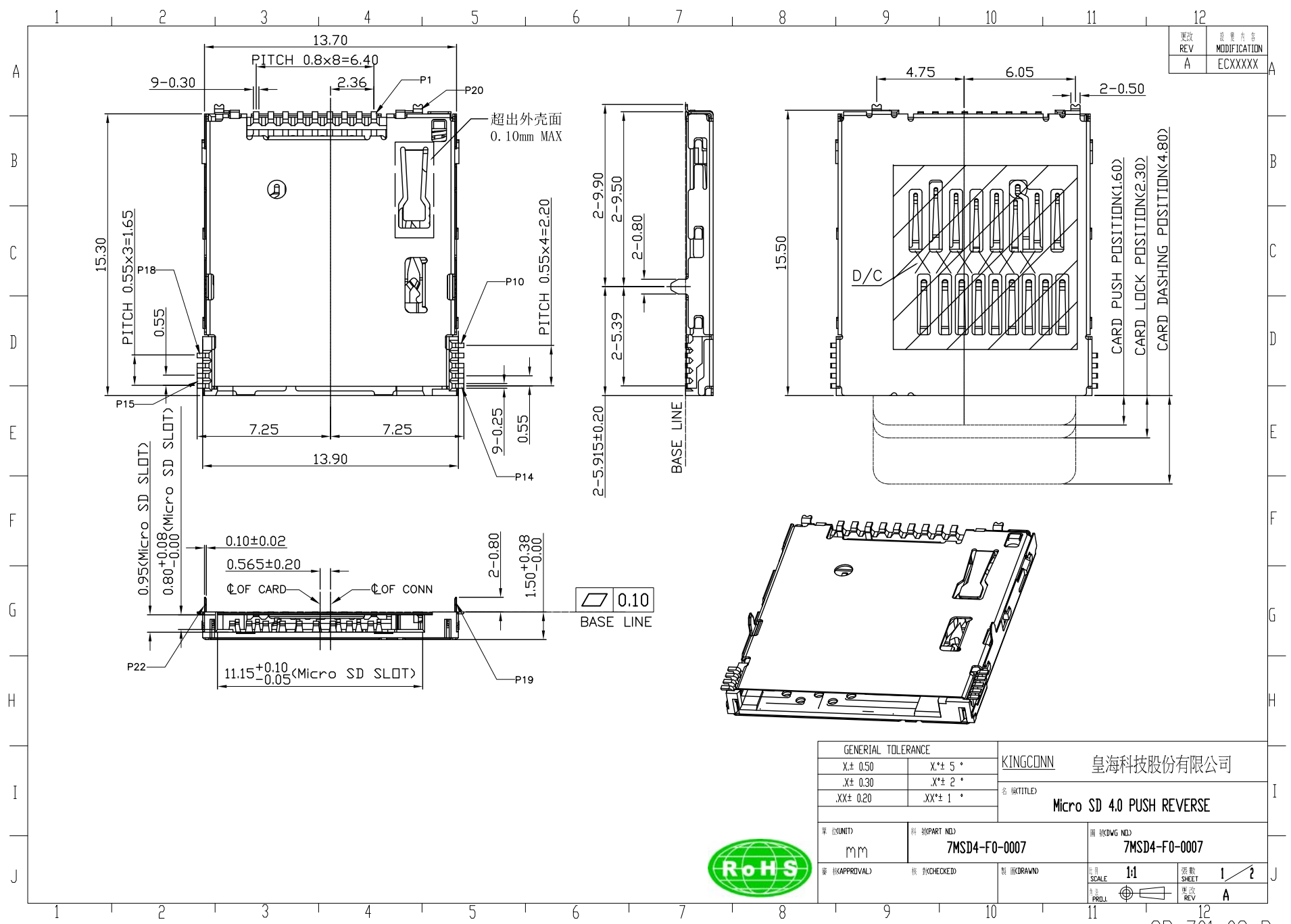
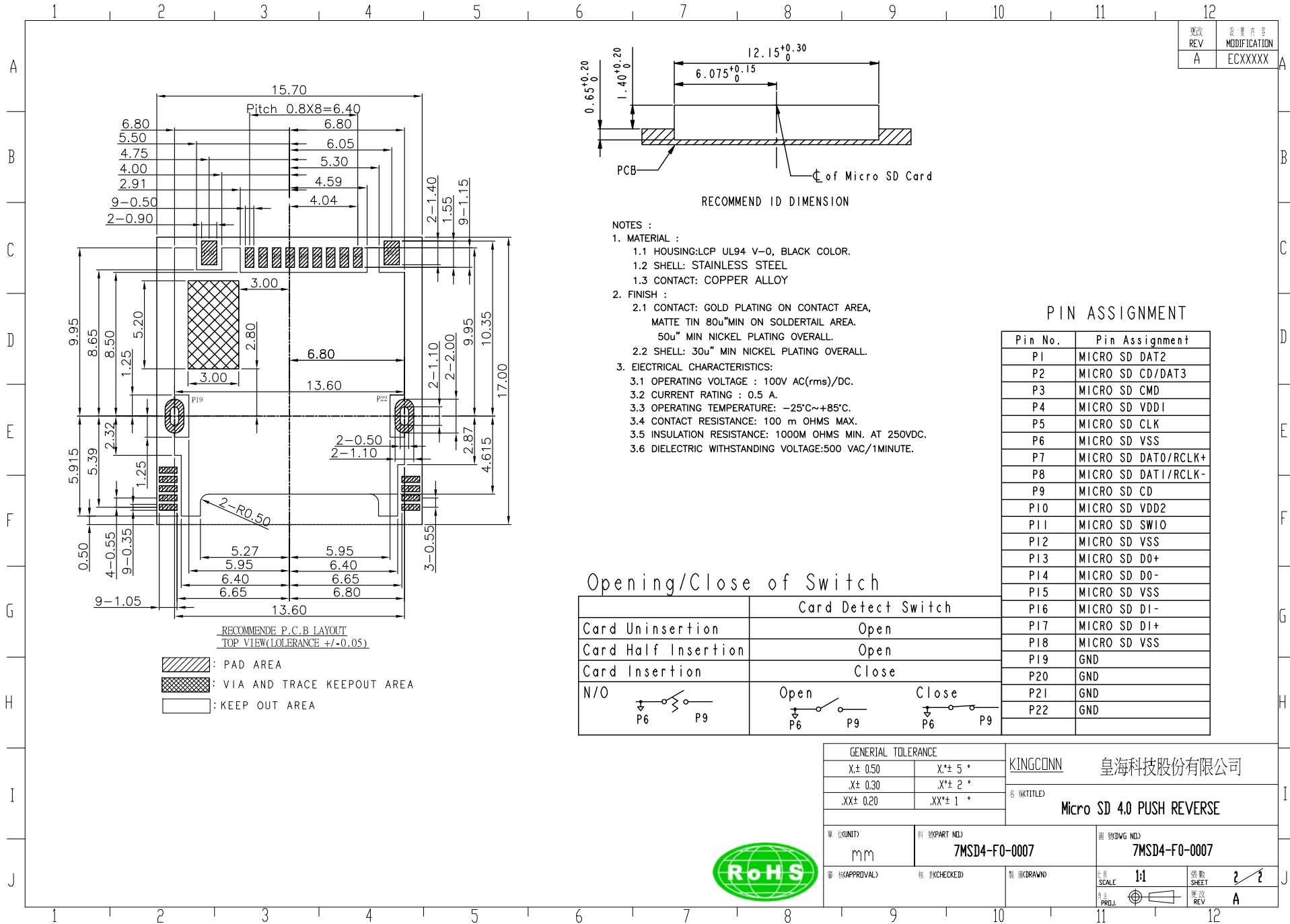


更改 REV	数量 MODIFICATION
A	ECXXXX

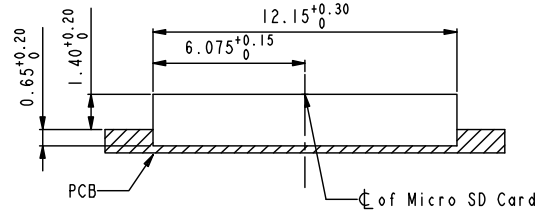


GENERAL TOLERANCE		KINGCONN 皇海科技股份有限公司	
X± 0.50	X* 5°	名 稱/TITLED Micro SD 4.0 PUSH REVERSE	
X± 0.30	X* 2°		
.XX± 0.20	.XX* 1°		
單 位/UNIT	料 號/PART NO.	圖 號/DWG NO.	
mm	7MSD4-F0-0007	7MSD4-F0-0007	
審 核/APPROVAL	核 對/CHECKED	製 圖/DRAWN	卷 數/SHEET 1/2
			圖 改/REV A





更改 REV	修改内容 MODIFICATION
A	ECXXXX



RECOMMEND ID DIMENSION

- NOTES :
- MATERIAL :
    - HOUSING:LCP UL94 V-0, BLACK COLOR.
    - SHELL: STAINLESS STEEL
    - CONTACT: COPPER ALLOY
  - FINISH :
    - CONTACT: GOLD PLATING ON CONTACT AREA, MATTE TIN 80u"MIN ON SOLDERTAIL AREA. 50u" MIN NICKEL PLATING OVERALL.
    - SHELL: 30u" MIN NICKEL PLATING OVERALL.
  - ELECTRICAL CHARACTERISTICS:
    - OPERATING VOLTAGE : 100V AC(rms)/DC.
    - CURRENT RATING : 0.5 A.
    - OPERATING TEMPERATURE: -25°C~+85°C.
    - CONTACT RESISTANCE: 100 m OHMS MAX.
    - INSULATION RESISTANCE: 1000M OHMS MIN. AT 250VDC.
    - DIELECTRIC WITHSTANDING VOLTAGE:500 VAC/1MINUTE.

PIN ASSIGNMENT

Pin No.	Pin Assignment
P1	MICRO SD DAT2
P2	MICRO SD CD/DAT3
P3	MICRO SD CMD
P4	MICRO SD VDD1
P5	MICRO SD CLK
P6	MICRO SD VSS
P7	MICRO SD DAT0/RCLK+
P8	MICRO SD DAT1/RCLK-
P9	MICRO SD CD
P10	MICRO SD VDD2
P11	MICRO SD SWIO
P12	MICRO SD VSS
P13	MICRO SD D0+
P14	MICRO SD D0-
P15	MICRO SD VSS
P16	MICRO SD DI-
P17	MICRO SD DI+
P18	MICRO SD VSS
P19	GND
P20	GND
P21	GND
P22	GND

Opening/Close of Switch

	Card Detect Switch
Card Uninsertion	Open
Card Half Insertion	Open
Card Insertion	Close
N/O	

RECOMMENDE P.C.B LAYOUT  
TOP VIEW(TOLERANCE +/-0.05)

- : PAD AREA
- : VIA AND TRACE KEEPOUT AREA
- : KEEP OUT AREA

GENERAL TOLERANCE		KINGCONN 皇海科技股份有限公司	
X± 0.50	X*± 5°	名 (TITLE) Micro SD 4.0 PUSH REVERSE	
.X± 0.30	.X*± 2°		
.XX± 0.20	.XX*± 1°		
UNIT) mm	PART NO.) 7MSD4-F0-0007	DWG NO.) 7MSD4-F0-0007	
APPROVAL)	CHECKED)	DRAWN)	SCALE) 1:1
			SHEET) 2/2
			REV) A

