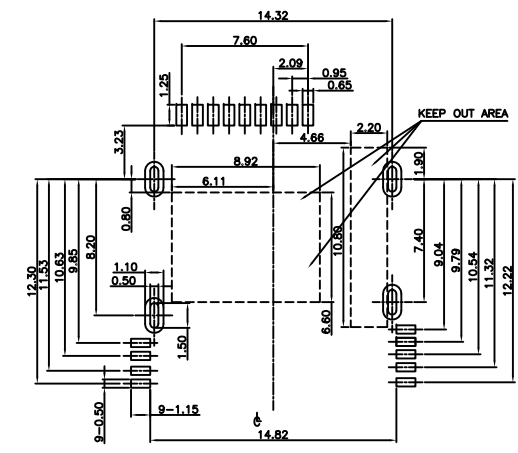
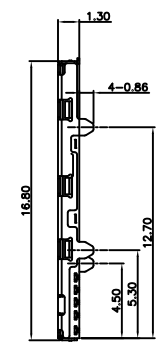
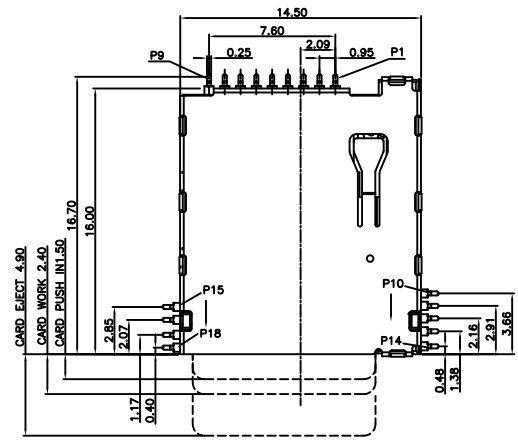


更改 REV	註釋內容 MODIFICATION
A	ECXXXXX



RECOMMENDED PCB LAYOUT
TOLERANCE UNLESS OTHERWISE IS ±0.05

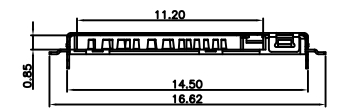
SPECIFICATION

MATERIAL

Insulator: Thermal Plastic, Rated UL94V-0
Contacts: Phosphor Copper
Shell: Stainless steel
CONTACT PLATING
Underplate: 50u"~100u" Nickel
Contact area: Gold Flash
Solder tails area: 100u"~200u" Tin

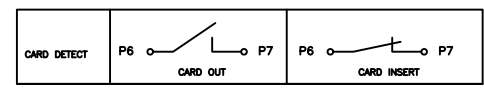
ELECTRICAL

Operation voltage: 10V
Current rating: 0.5A min.
Contact resistance: 100mohms
Insulation resistance: 1000Mohms
Dielectric withstanding voltage: 500V AC/Minute
Temperature range: -20°C to +60°C
Mating cycles: 3000 insertions



PIN DEFINE:

PIN#	NAME	DESCRIPTION	PIN#	NAME	DESCRIPTION
1	DAT2	DATA LINE BIT2	11	SWIO	SINGLE WIRE PROTOCOL INTERFACE
2	CD/DAT3	CARD DETECT/DATA LINE BIT3	12	VSS2	SUPPLY VOLTAGE GROUND
3	CMD	COMMAND/RESPONSE	13	DO+	DIFFERENTIAL DATE 0+
4	VDD1	SUPPLY VOLTAGE	14	DO-	DIFFERENTIAL DATE 0-
5	CLK	CLOCK	15	VSS3	SUPPLY VOLTAGE GROUND
6	CD	CARD DETECT	16	D1+	DIFFERENTIAL DATE 1+
7	VSS1	SUPPLY VOLTAGE GROUND	17	D1-	DIFFERENTIAL DATE 1-
8	DAT0	DATA LINE BIT0	18	VSS4	SUPPLY VOLTAGE GROUND
9	DAT1	DATA LINE BIT1			
10	VDD2	SUPPLY VOLTAGE(1.8V)			



GENERAL TOLERANCE		KINGCONN 皇海科技股份有限公司
X± 0.50	X*± 5°	
.X± 0.30	.X*± 2°	
.XX± 0.20	.XX*± 1°	名稱(TITLE) Micro SD4.0 Top, Push/Push Type , H 1.30mm
單位(UNIT) mm	料號(PART NO.) 7MSD4-FA-0001-A	圖號(DWG NO.) 7MSD4-FA-0001-A
審核(APPROVAL)	核對(CHECKED)	製圖(DRAWN)
		比例(SCALE) 1:1
		張數(SHEET) 1/1
		更改(REV) A

