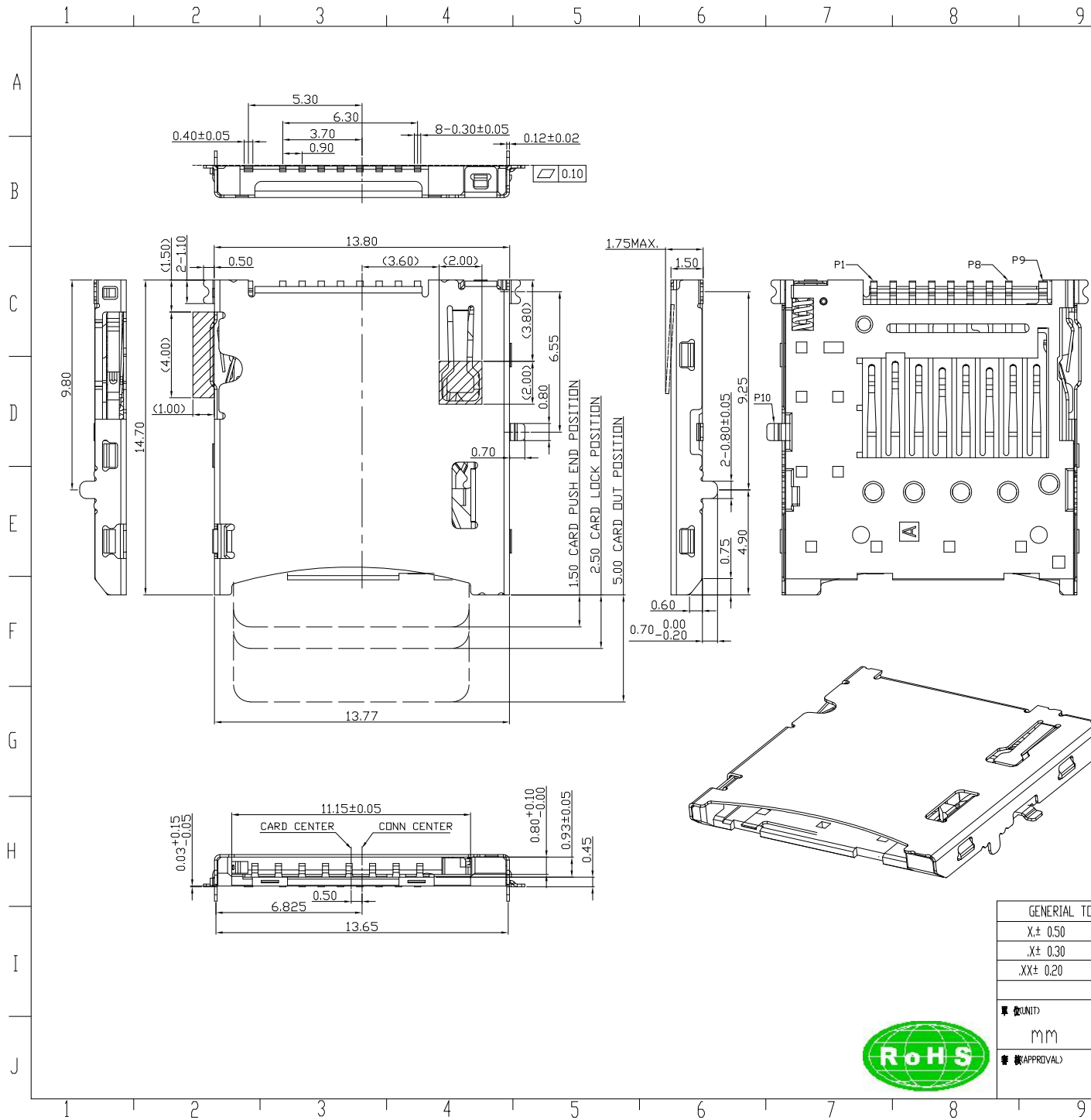
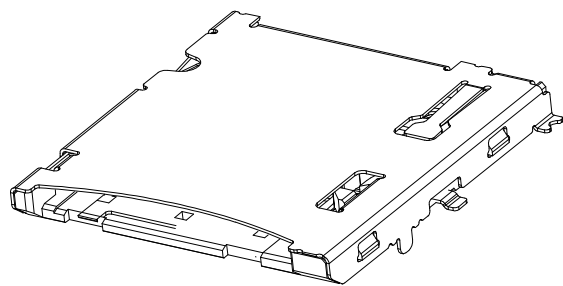


更改 REV	變更內容 MODIFICATION
A	ECXXXXX



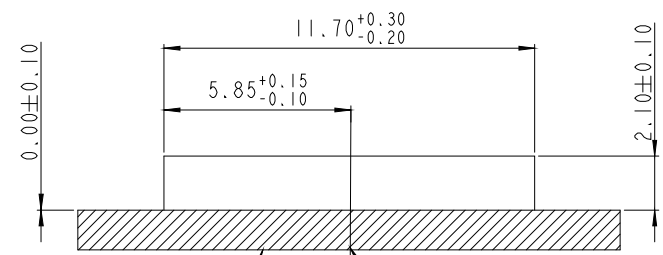
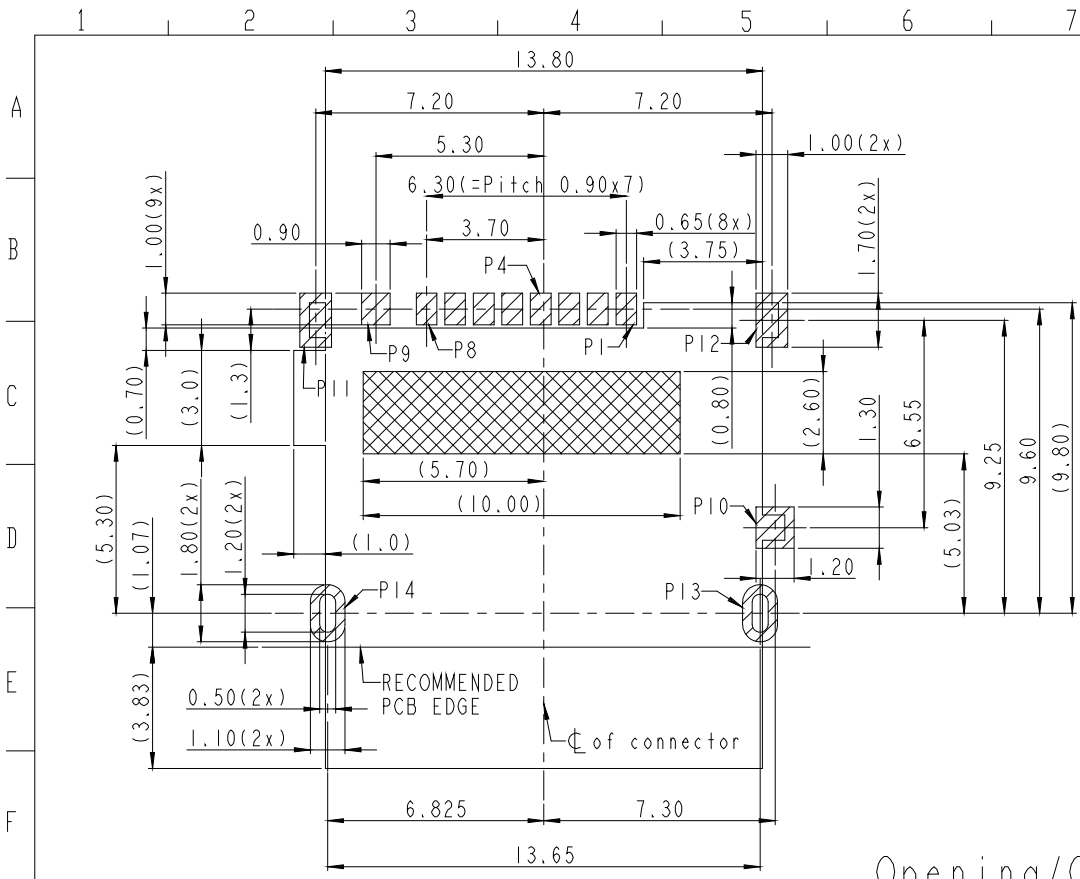
- NOTES :
- MATERIAL :
 - HOUSING:LCP S475 UL94 V-0, BLACK COLOR.
 - SHELL: STAINLESS STEEL SUS304
 - CONTACT: COPPER ALLOY C5210
 - FINISH :
 - CONTACT: GOLD PLATING ON CONTACT AREA, GOLD FLASH ON SOLDERTAIL AREA. 50u" MIN NICKEL PLATING OVERALL.
 - SHELL: 30u" MIN SOLDERABLE NICKEL PLATING OVERALL. GOLD FLASH ON SOLDERTAIL AREA.
 - ELECTRICAL CHARACTERISTICS:
 - OPERATING VOLTAGE : 100V AC(rms)/DC.
 - CURRENT RATING : 0.5 A.
 - OPERATING TEMPERATURE: -25°C~+85°C.
 - CONTACT RESISTANCE: 100 m OHMS MAX.
 - INSULATION RESISTANCE: 1000M OHMS MIN. AT 250VDC.
 - DIELECTRIC WITHSTANDING VOLTAGE:500 VAC/1MINUTE.



GENERAL TOLERANCE		KINGCONN	皇海科技股份有限公司
X± 0.50	X*± 5 °		
.X± 0.30	.X*± 2 °		
.XX± 0.20	.XX*± 1 °	名譽/TITLE MICRO SD PUSH H:1.5mm	
單位/UNIT mm	料號/PART NO. 7MSDP-F0-0030	圖號/DWG NO. 7MSDP-F0-0030	
審核/APPROVAL	核對/CHECKED	繪圖/DRAWN	比例/SCALE 1:1 張數/SHEET 1/2 角標/PROJ 更改/REV A



更改 REV	變更內容 MODIFICATION
A	ECXXXXX



Recommend ID Dimension

PIN ASSIGNMENT

Pin No.	PIN ASSIGNMENT
P1	MICRO SD_DAT2
P2	MICRO SD_CD/DAT3
P3	MICRO SD_CMD
P4	MICRO SD_VDD
P5	MICRO SD_CLK
P6	MICRO SD_VSS
P7	MICRO SD_DAT0
P8	MICRO SD_DAT1
P9	MICRO SD_CD
P10	GND
P11	GND
P12	GND
P13	GND
P14	GND

Opening/Close of Switch

Card Detect Switch	
Card Uninsertion	Open
Card Half Insertion	Open
Card Insertion	Close
N/O	

Recommended P.C.B LAYOUT
TOP VIEW(TOLERANCE+/-0.05)

- : PAD AREA
- : NO COPPER AREA
- : KEEP OUT AREA

GENERAL TOLERANCE	
X ± 0.50	X* ± 5°
X ± 0.30	X* ± 2°
.XX ± 0.20	.XX* ± 1°

KINGCONN 皇海科技股份有限公司
名稱(TITLE) MICRO SD PUSH H:1.5mm

單位(UNIT) mm	料號(PART NO.) 7MSDP-F0-0030	圖號(DWG NO.) 7MSDP-F0-0030
審核(APPROVAL)	核對(CHECKED)	製圖(DRAWN)
比例(SCALE) 1:1	張數(SHEET) 2/2	更改(REV) A

