

更改 REV	修改内容 MODIFICATION
A	ECXXXX

### PIN ASSIGNMENTS

Pin#	Name	Description
1	DAT2	Data Line(Bit 2)
2	CD/DAT3	Card Detect/Data line(Bit 3)
3	CMD	Command/Response
4	V <sub>DD</sub>	Supply voltage
5	CLK	Clock
6	V <sub>SS</sub>	Supply voltage ground
7	DAT0	Data Line (Bit 0)
8	DAT1	Data Line (Bit 1)
9	GND	
10	COMMON	CD1
11	DETECT SW(GND)	CD2

#### NOTES:

##### 1.ELECTRICAL:

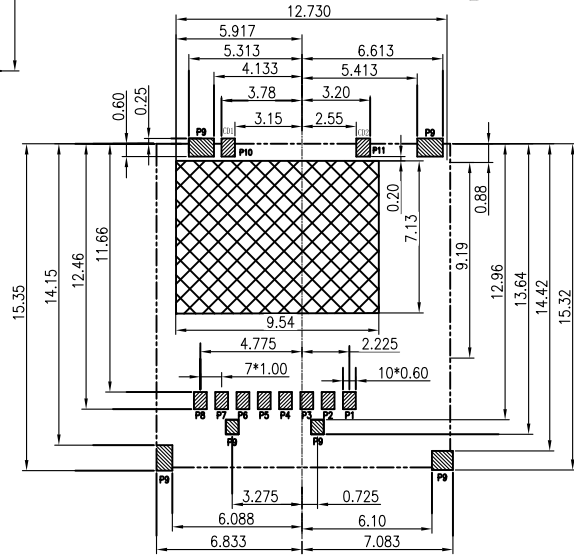
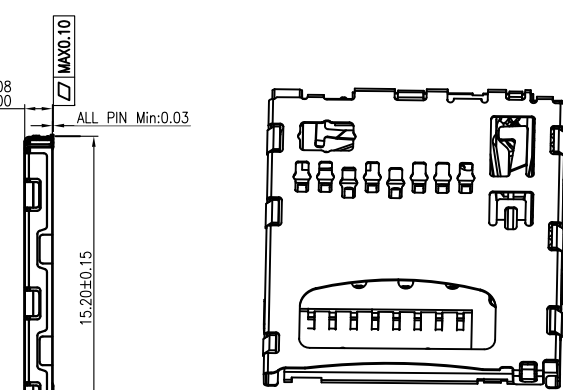
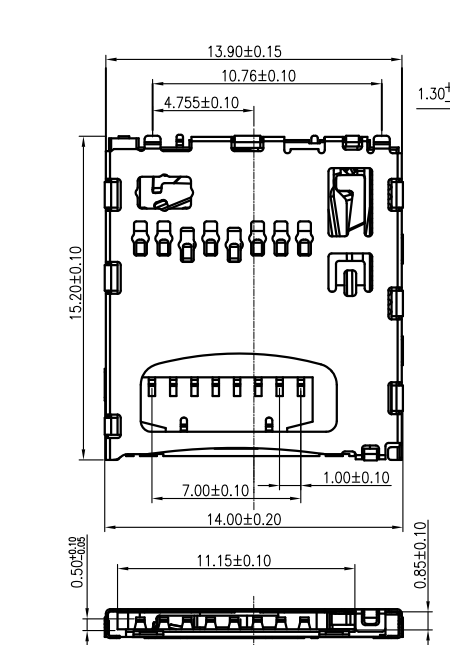
VOLTAGE :100V AC  
CURRENT:0.5A Max  
CONTACT RESISTANCE:40MΩ MAX  
VOLTAGE PROOF:500V AC  
INSULATION RESISTANCE:1000MΩ MIN

##### 2.MECHANICAL:

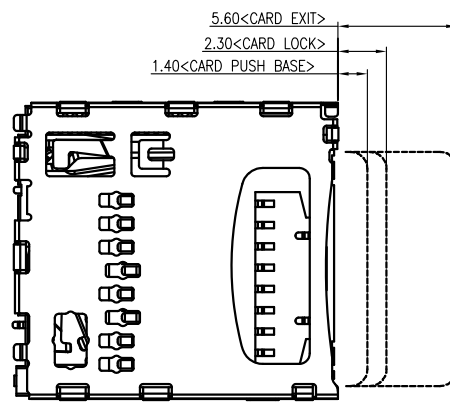
CARD INSERTION/WITHDRAWAL  
FORCE:10N MAX  
PUSH IN STRENGTH:10N  
DURABILITY:10,000 CYCLES

##### 3.MATERIAL:

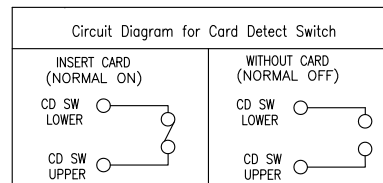
HOUSING:LCP UL94V-0 BLACK  
SLIDE:LCP UL94V-0 BLACK  
LATCH:PHOSPHOR BRONZE  
CONTACT:PHOSPHOR BRONZE  
SHELL:STAINLESS STEEL  
SPRING:STAINLESS STEEL  
CRANK-AXLE:STAINLESS STEEL



PCB LARYUOT  
GENERAL TOLERANCE:±0.05



CARD INSERT LARYUOT



GENERAL TOLERANCE	
X± 0.50	X*± 5 °
.X± 0.30	.X*± 2 °
.XX± 0.20	.XX*± 1 °

KINGCONN	皇海科技股份有限公司
名 称(TITLE) MICRO SD PUSH H:1.29mm	

单 位(UNIT) mm	料 号(PART NO.) 7MSDP-F0-0037	图 号(DWG NO.) 7MSDP-F0-0037
审 核(APPROVAL)	核 对(CHECKED)	製 图(DRAWN)
比 例 SCALE 1:1	张 数 SHEET 1/1	更 改 REV A

