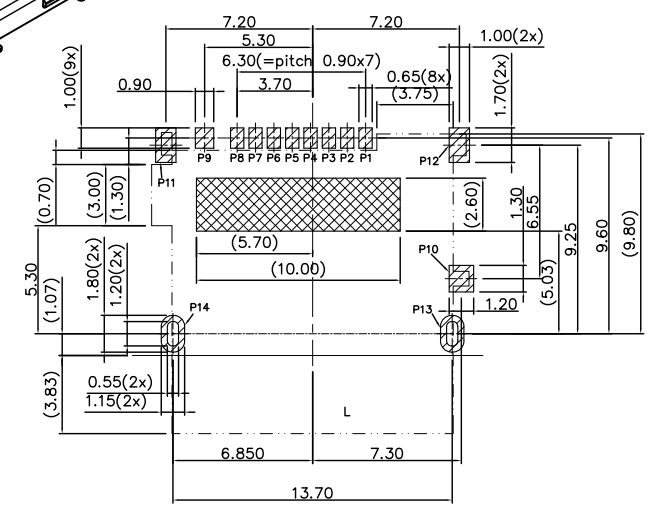
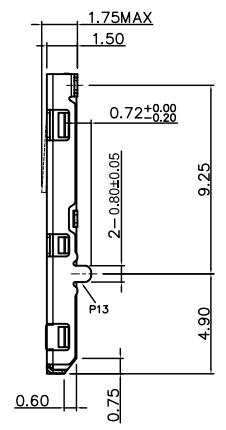
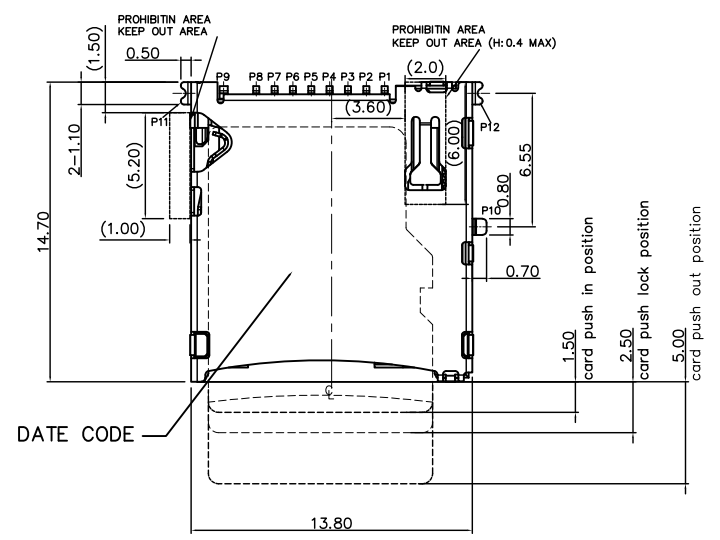
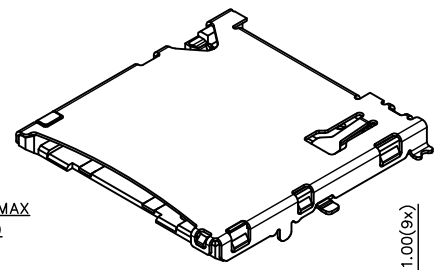
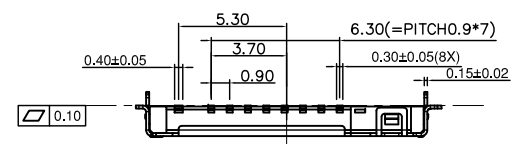


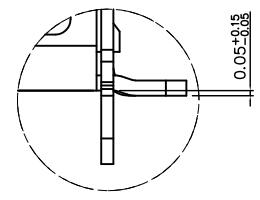
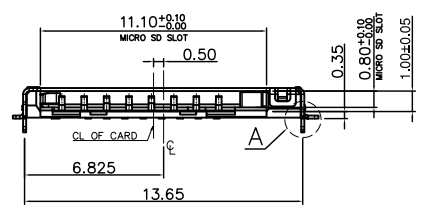
更改 REV	修改内容 MODIFICATION
A	ECXXXXX



RECOMMENDED PCB LAYOUT(TOP VIEW)
GENERAL TOLERANCE: ±0.05

- PAD AREA
- NO COPPER AREA
- KEEP OUT AREA

- NOTES:
- MATERIAL:
 - 1.1 PLASTIC: LCP , UL 94V-0, COLOR: BLACK.
 - 1.2 CONTACT: COPPER ALLOY.
 - 1.3 SHELL: STAINLESS STEEL.
 - FINISH:
 - 2.1 TERMINAL: 50u" MIN. NICKEL PLATED OVERALL.
 - 2.2 CONTACT: Au 1u".
 - 2.3 TAIL: 100u" MATT-TIN PLATED.
 - 2.4 SHELL: 50u" MIN. NICKEL PLATED OVERALL.



DETAIL A
SCALE 5:1

PIN NUMBER	PIN DEFINE
PIN 1	MICRO SD_DAT2
PIN 2	MICRO SD_CD/DAT3
PIN 3	MICRO SD_CMD
PIN 4	MICRO SD_VDD
PIN 5	MICRO SD_CLK
PIN 6	MICRO SD_VSS
PIN 7	MICRO SD_DAT0
PIN 8	MICRO SD_DAT1
PIN 9	MICRO SD_CD
PIN 10	GND
PIN 11,12,13,14	GND

CARD DETECT SWITCH OPEN/CLOSE FOR MICRO SD CARD POSITION	
UN-INSERTION	CARD DERECT SWITCH
CARD UNINSERTION	OPEN
CARD HALF INSERTION	OPEN
CARD INSERTION	CLOSE

N/O OPEN CLOSE

P10 P9 P10 P9 P10 P9



GENERAL TOLERANCE		KINGCONN 皇海科技股份有限公司
X±0.50	X.°±5°	
.X±0.30	.X°±2°	
.XX±0.20	.XX°±1°	名 稱(TITLED) MICRO SD PUSH
單 位(UNIT) mm	料 號(PART NO) 7MSDP-F0-0039	圖 號(DWG NO) 7MSDP-F0-0039
審 核(APPROVAL)	核 對(CHECKED)	繪 圖(DRAWN)
SCALE 1:1		張 數(SHEET) 1/1
PROJ.		更 改(REV) A