

更改 REV	变更内容 MODIFICATION
A	ECXXXXX

NOTE:

A. MATERIAL:

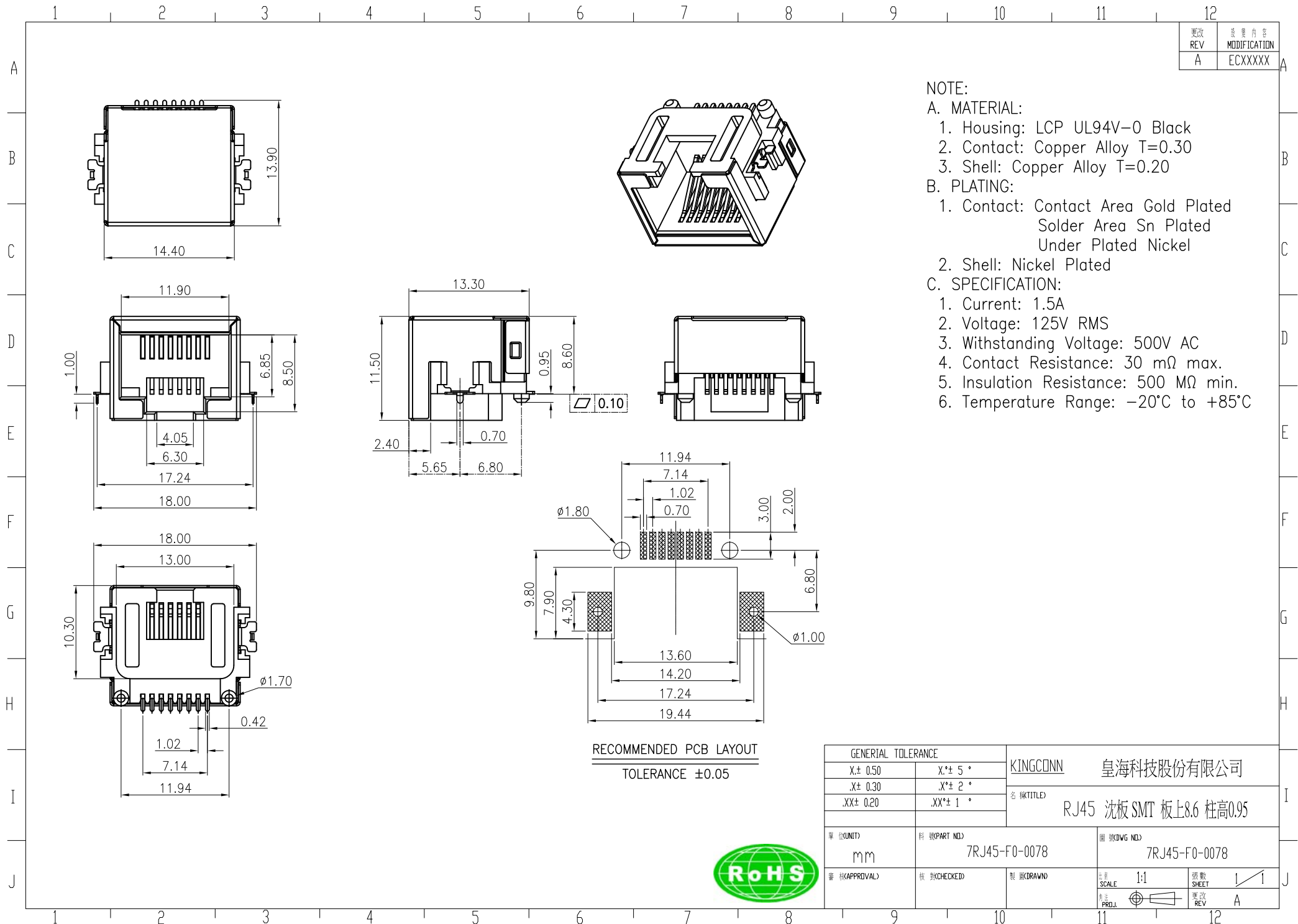
1. Housing: LCP UL94V-0 Black
2. Contact: Copper Alloy T=0.30
3. Shell: Copper Alloy T=0.20

B. PLATING:

1. Contact: Contact Area Gold Plated  
Solder Area Sn Plated  
Under Plated Nickel
2. Shell: Nickel Plated

C. SPECIFICATION:

1. Current: 1.5A
2. Voltage: 125V RMS
3. Withstanding Voltage: 500V AC
4. Contact Resistance: 30 mΩ max.
5. Insulation Resistance: 500 MΩ min.
6. Temperature Range: -20°C to +85°C



RECOMMENDED PCB LAYOUT  
TOLERANCE ±0.05

GENERAL TOLERANCE		KINGCONN 皇海科技股份有限公司	
X± 0.50	X*± 5°	名 称(TITLE) RJ45 沈板 SMT 板上8.6 柱高0.95	
.X± 0.30	.X*± 2°		
.XX± 0.20	.XX*± 1°		
单 位(UNIT) mm	料 号(PART NO.) 7RJ45-F0-0078	图 号(DWG NO.) 7RJ45-F0-0078	
审 核(APPROVAL)	核 对(CHECKED)	製 图(DRAWN)	比 例 SCALE 1:1 图 号 SHEET 1/1 更 改 REV A

