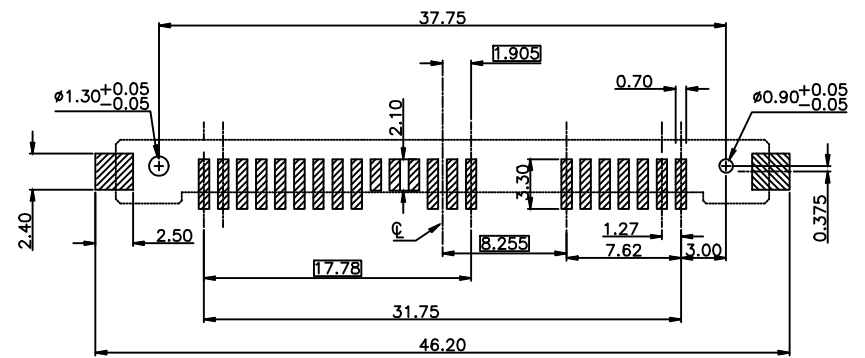
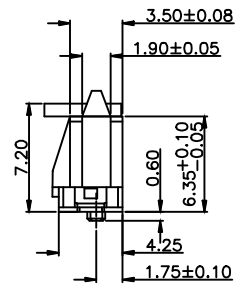
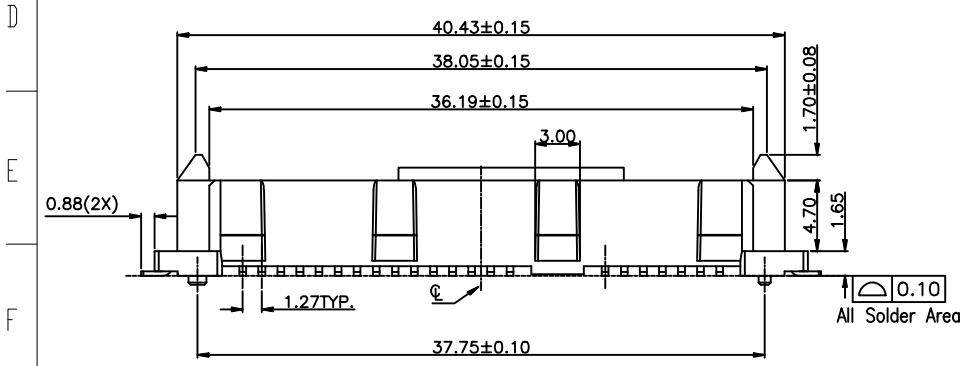


3D view

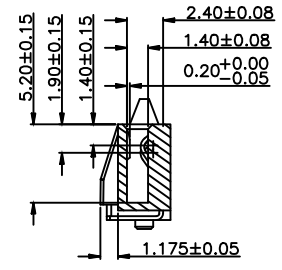
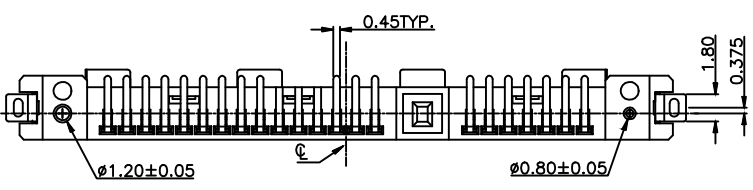
NOTE:

- MATERIAL:**  
HOUSING: LCP, UL 94V-0, BLACK COLOR.  
CAP: LCP, UL 94V-0, BLACK COLOR.  
CONTACTS: PHOSPHOR BRONZE, T=0.25mm  
PEGS: BRASS, T=0.30mm
- FINISH:**  
CONTACTS: (SEE TABLE) GOLD PLATED ON CONTACT AREA, 2.54μm [100μ"] MIN. MATTE-TIN ON SOLDER TAIL, WITH ENTIRE CONTACT UNDERPLATED 1.27μm [50μ"] MIN. NICKEL.  
PEGS: 2.54μm [100μ"] MIN. BRIGHT-TIN OVER 1.27μm [50μ"] MIN. NICKEL PLATED.
- ELECTRICAL:**  
CONTACT RESISTANCE: 45 mΩ MAX.  
INSULATION RESISTANCE: 1000 MΩ MAX.  
DIELECTRIC WITHSTANDING VOLTAGE: 500V AC  
CURRENT RATING: 1.5A  
VOLTAGE RATING: 12V AC
- ENVIRONMENTAL:**  
OPERATING TEMPERATURE: -25°C TO +85°C

更改 REV	變更內容 MODIFICATION
A	ECXXXXX



RECOMMEND PCB LAYOUT TOLERANCE: ±0.05



SECTION

YES	[15μ"]	7SATA-C0-0012
YES	G/F	7SATA-F0-0012
HalogenFree	MIN. GOLD THICKNESS	PART NUMBER

GENERAL TOLERANCE	
X± 0.50	X*± 5°
.X± 0.30	.X*± 2°
.XX± 0.20	.XX*± 1°

KINGCONN 皇海科技股份有限公司  
名 稱(TITLE) SATA 7+12P VERTICAL SMT TYPE

單位(UNIT) mm	料號(PART NO.) 7SATA-X0-0012	圖號(DWG NO.) 7SATA-X0-0012
審核(APPROVAL)	核對(CHECKED)	製圖(DRAWN)
比例(SCALE) 1:1	張數(SHEET) 1/1	更改(REV) A

