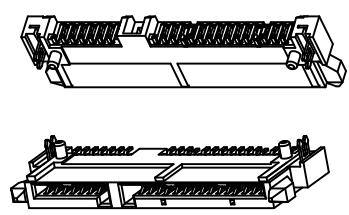
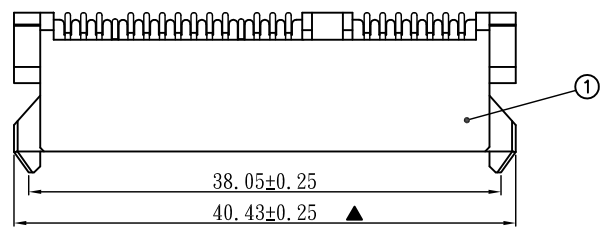
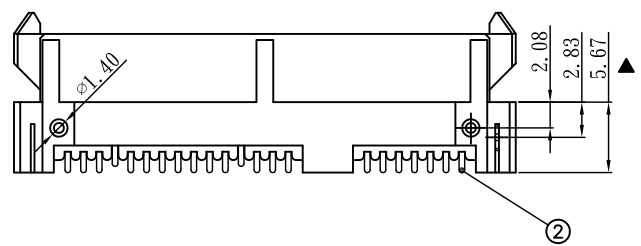
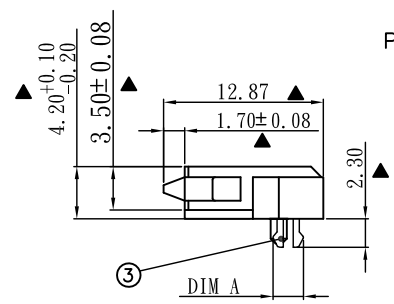
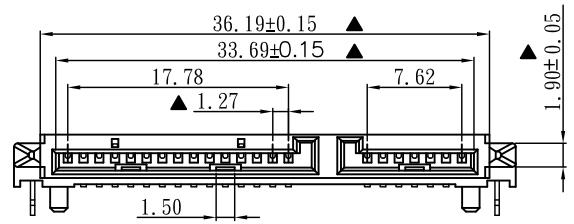


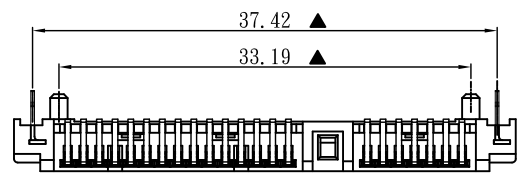
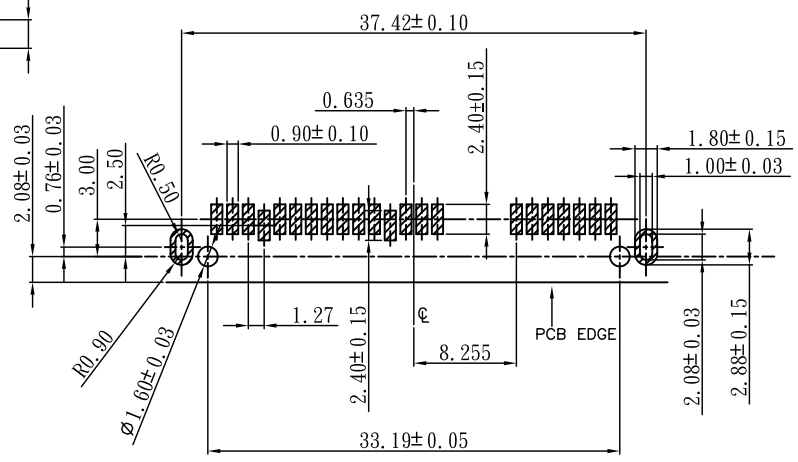
更改 REV	修改内容 MODIFICATION
A	ECXXXX



**SPECIFICATION:**  
**1.MATERIAL:**  
 HOUSING: LCP UL 94V-0  
 COLOR:BLACK  
 CONTACT: PHOSPHOR BRONZE C5191R-H,T=0.25mm  
 PEG: BRASS C2680R-H,T=0.30mm  
**2.FINISH:**  
 CONTACT:1u"3u"5u"15u" GOLD/TIN PLATING ON CONTACT AREA  
 100u" MIN. TIN PLATING ON SOLDERTAILS  
 50u" MIN.NICKEL UNDERPLATING OVER ALL  
 PEG:100u" MIN. TIN PLATING ON SOLDERTAILS  
 50u" MIN.NICKEL UNDERPLATING OVER ALL



ITEM	DIM A
1	2.10
2	2.30
3	2.45



7SATA-X0-0013

F:1u"gold  
 D:3u"gold  
 A:5u"gold  
 C:15u"gold

GENERAL TOLERANCE		KINGCONN 皇海科技股份有限公司
X±0.50	X*±5°	
.X±0.30	.X*±2°	
.XX±0.20	.XX*±1°	名称/TITLE: SATA 7+15P 母座 SMT H: 4.20 板上型 侧插式
单位/UNIT: mm	料号/PART NO: 7SATA-X0-0013	图号/DWG NO: 7SATA-X0-0013
审核/APPROVAL:	核校/CHECKED:	制图/DRAWN:
		比例/SCALE: 1:1
		张数/SHEET: 1 / 1
		更改/REV: A

