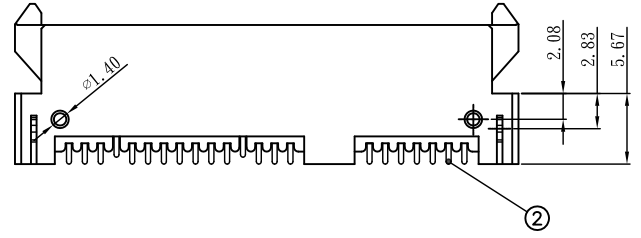
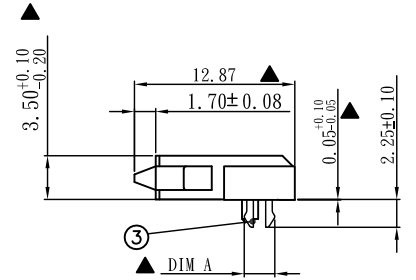
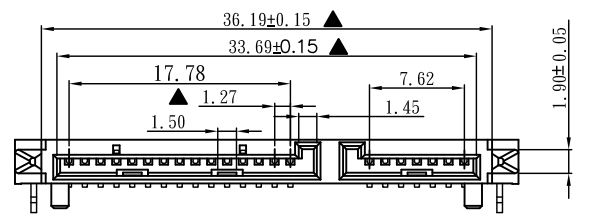
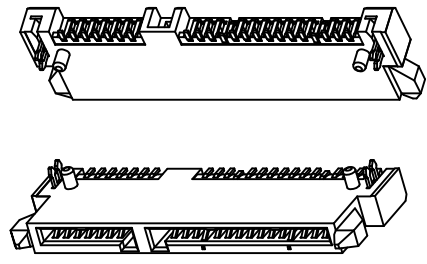
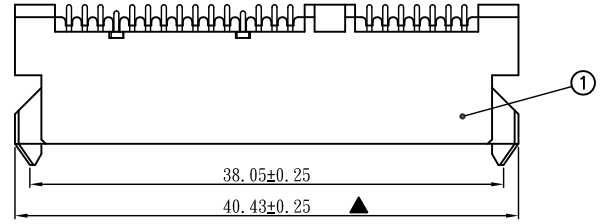
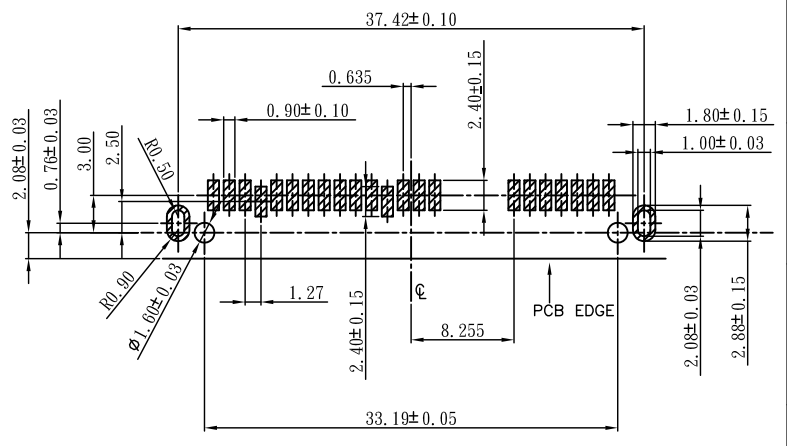


更改 REV	修改内容 MODIFICATION
A	ECXXXX

**SPECIFICATION:**  
**1.MATERIAL:**  
 HOUSING: LCP UL 94V-0  
 COLOR: BLACK  
 CONTACT: PHOSPHOR BRONZE C5191R-H,T=0.25mm  
 PEG: BRASS C2680R-H,T=0.30mm  
**2.FINISH:**  
 CONTACT:1u"3u"5u"15u" GOLD/TIN PLATING ON CONTACT AREA  
 100u" MIN. TIN PLATING ON SOLDERTAILS  
 50u" MIN.NICKEL UNDERPLATING OVER ALL  
 PEG:100u" MIN. TIN PLATING ON SOLDERTAILS  
 50u" MIN.NICKEL UNDERPLATING OVER ALL



ITEM	DIM A
1	2.10
2	2.30
3	2.45



**7SATA-X0-0018**  
 F:1u"gold  
 D:3u"gold  
 A:5u"gold  
 C:15u"gold

RECOMMEND PCB LAYOUT (T=1.2)  
 PCB TOLERANCE:±0.05

GENERAL TOLERANCE		KINGCONN 皇海科技股份有限公司
X± 0.50	X*± 5°	
.X± 0.30	.X*± 2°	
.XX± 0.20	.XX*± 1°	名称(TITLE) SATA 7+15P 母座SMT H: 3.50 板上侧插式
单位(UNIT) mm	料号(PART NO) 7SATA-X0-0018	图号(DWG NO) 7SATA-X0-0018
审核(APPROVAL)	核对(CHECKED)	制图(DRAWN)
		比例(SCALE) 1:1
		张数(SHEET) 1/1
		更改(REV) A

