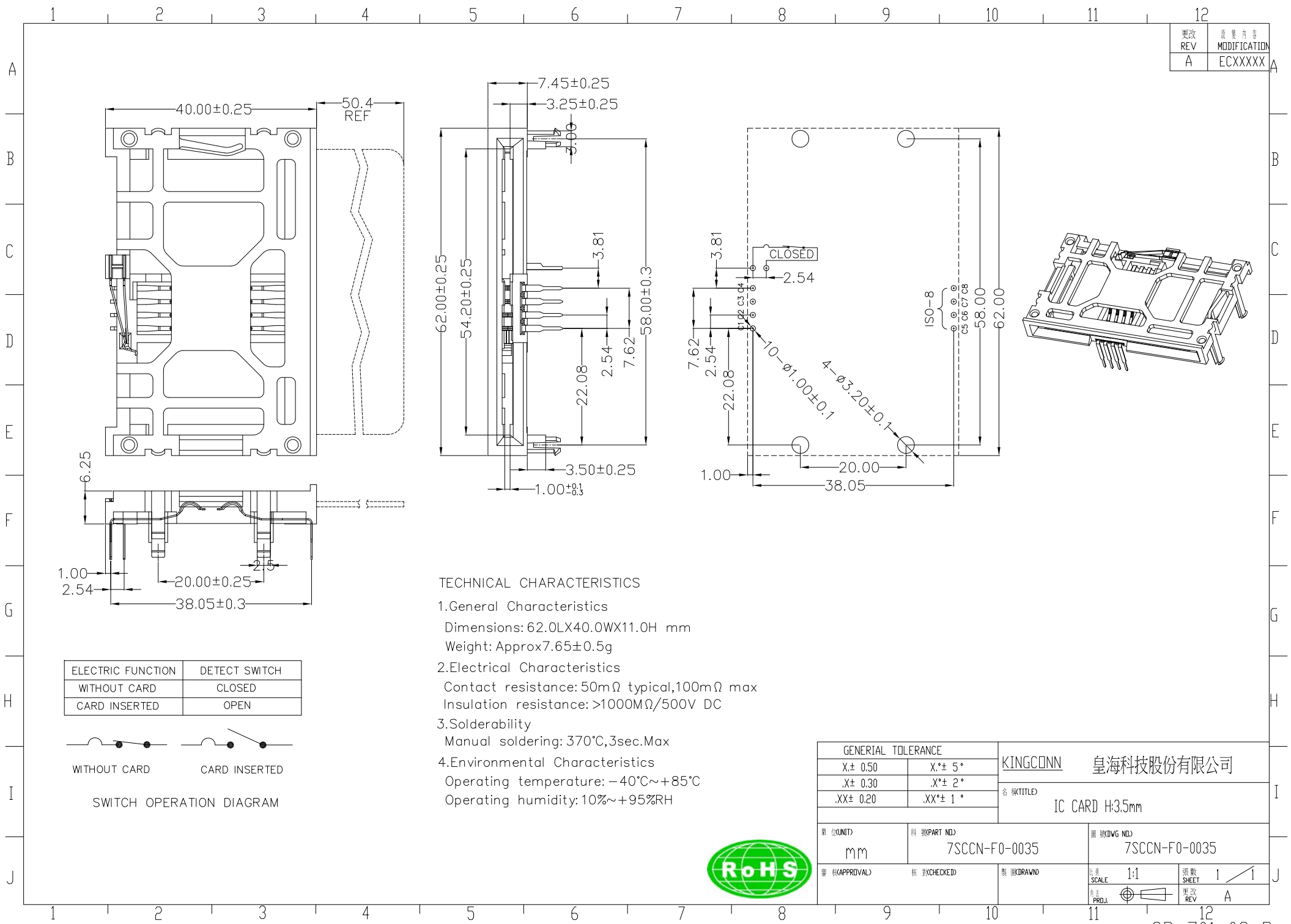


更改 REV	修改 MODIFICATION
A	ECXXXXX



TECHNICAL CHARACTERISTICS

1.General Characteristics

Dimensions: 62.0LX40.0WX11.0H mm

Weight: Approx 7.65±0.5g

2.Electrical Characteristics

Contact resistance: 50mΩ typical, 100mΩ max

Insulation resistance: >1000MΩ/500V DC

3.Solderability

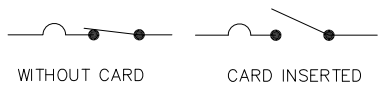
Manual soldering: 370°C, 3sec. Max

4.Environmental Characteristics

Operating temperature: -40°C~+85°C

Operating humidity: 10%~+95%RH

ELECTRIC FUNCTION	DETECT SWITCH
WITHOUT CARD	CLOSED
CARD INSERTED	OPEN



SWITCH OPERATION DIAGRAM



GENERAL TOLERANCE		KINGCONN 皇海科技股份有限公司	
X± 0.50	X*± 5°	名 稱(TITLE) IC CARD H:3.5mm	
.X± 0.30	.X*± 2°		
.XX± 0.20	.XX*± 1°		
單 位(UNIT) mm	料 號(PART NO.) 7SCCN-F0-0035	圖 號(DWG NO.) 7SCCN-F0-0035	
審 核(APPROVAL)	核 對(CHECKED)	製 圖(DRAWN)	比 例 SCALE 1:1
			張 數 SHEET 1/1
			更 改 REV A