

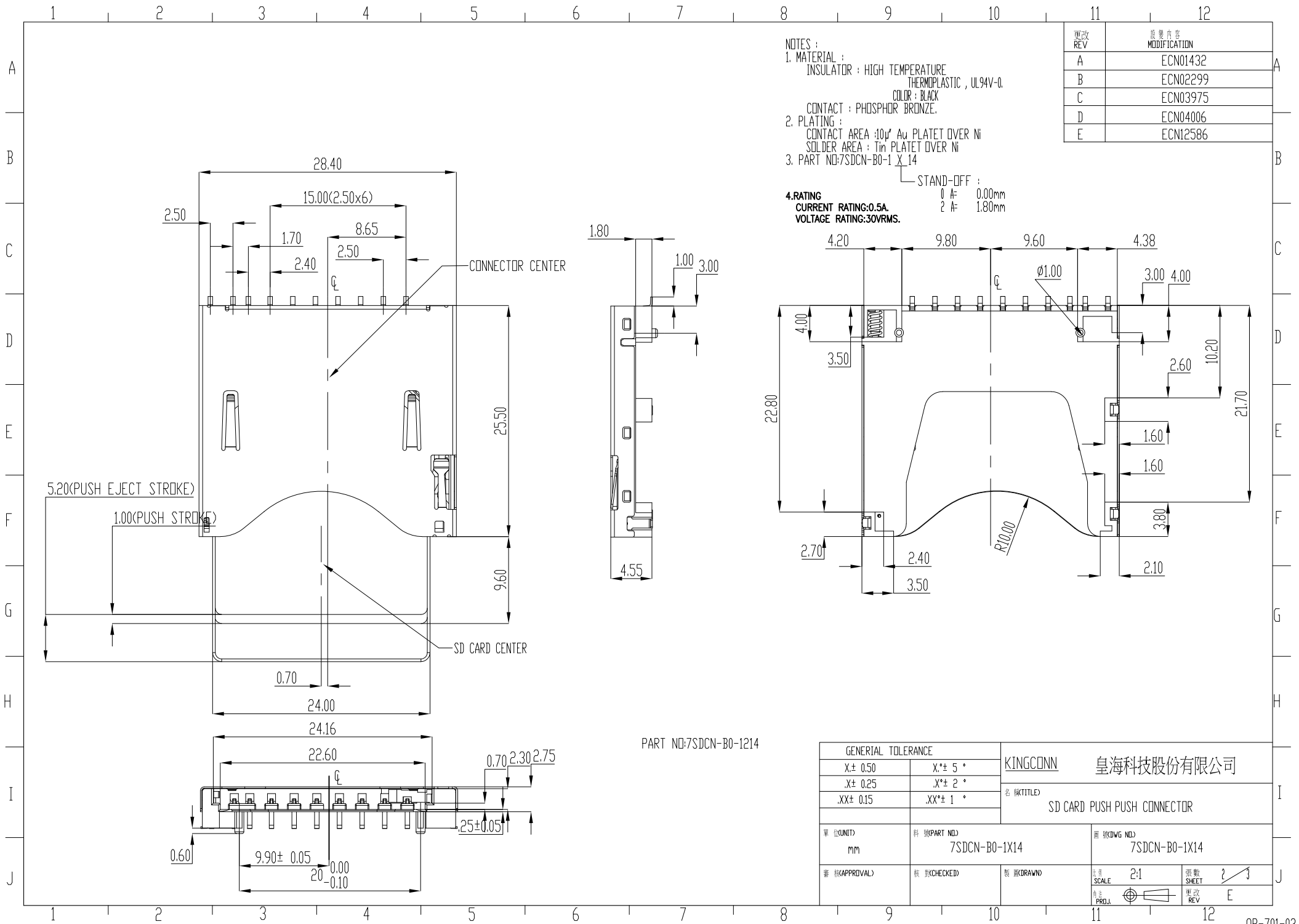
NOTES :

- MATERIAL :
INSULATOR : HIGH TEMPERATURE THERMOPLASTIC , UL94V-0.
COLOR : BLACK
CONTACT : PHOSPHOR BRONZE.
- PLATING :
CONTACT AREA : 10μ Au PLATET OVER Ni
SOLDER AREA : Tin PLATET OVER Ni
- PART NO:7SDCN-B0-1 X 14
STAND-OFF :
0 A: 0.00mm
2 A: 1.80mm
- RATING
CURRENT RATING:0.5A.
VOLTAGE RATING:30VRMS.

更改 REV	變更內容 MODIFICATION
A	ECN01432
B	ECN02299
C	ECN03975
D	ECN04006
E	ECN12586

PART NO: 7SDCN-B0-1014

GENERAL TOLERANCE		KINGCONN 皇海科技股份有限公司	
X± 0.50	X*± 5°	名稱(TITLE) SD CARD PUSH PUSH CONNECTOR	
.X± 0.25	.X*± 2°		
.XX± 0.15	.XX*± 1°		
單位(UNIT) MM	料號(PART NO) 7SDCN-B0-1X14	圖號(DWG NO) 7SDCN-B0-1X14	比例(SCALE) 2:1
審核(APPROVAL)	檢查(CHECKED)	製圖(DRAWN)	張數(SHEET) 1/3
			更改 REV E



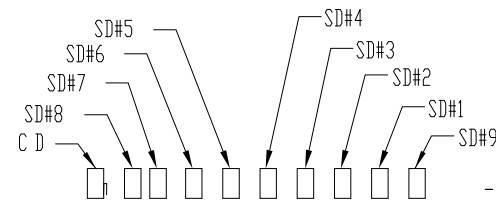
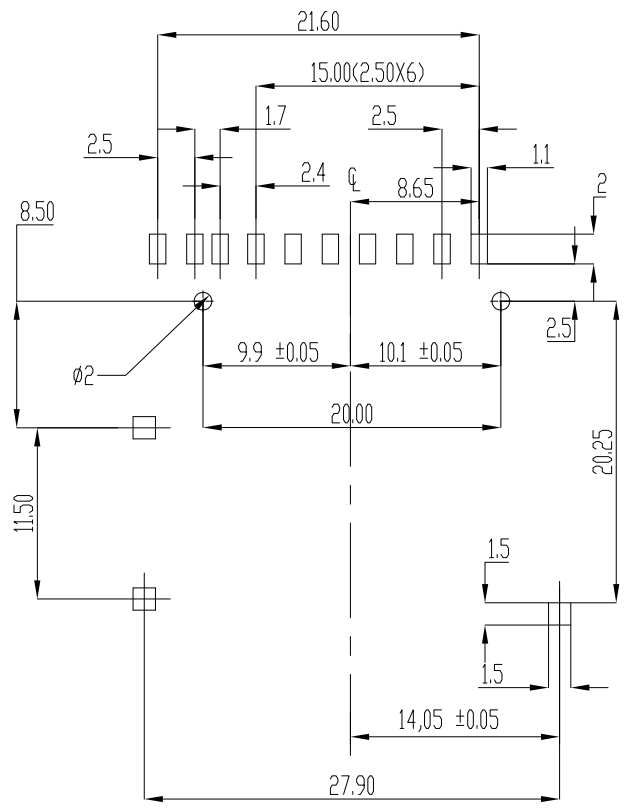
NOTES :
 1. MATERIAL :
 INSULATOR : HIGH TEMPERATURE THERMOPLASTIC , UL94V-0.
 COLOR : BLACK
 CONTACT : PHOSPHOR BRONZE.
 2. PLATING :
 CONTACT AREA :10µ Au PLATET OVER Ni
 SOLDER AREA : Tin PLATET OVER Ni
 3. PART NO:7SDCN-B0-1 X 14
 STAND-OFF :
 0 A: 0.00mm
 2 A: 1.80mm
 4.RATING
 CURRENT RATING:0.5A
 VOLTAGE RATING:30VRMS.

更改 REV	變更內容 MODIFICATION
A	ECN01432
B	ECN02299
C	ECN03975
D	ECN04006
E	ECN12586

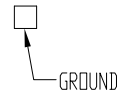
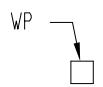
PART NO:7SDCN-B0-1214

GENERAL TOLERANCE		KINGCONN 皇海科技股份有限公司	
X± 0.50	X°± 5 °	名 稱(TITLE) SD CARD PUSH PUSH CONNECTOR	
X± 0.25	X°± 2 °		
.XX± 0.15	.XX°± 1 °		
單 位(UNIT) mm	料 號(PART NO) 7SDCN-B0-1X14	圖 號(DWG NO) 7SDCN-B0-1X14	
審 核(APPROVAL)	核 對(CHECKED)	製 圖(DRAWN)	比 例 SCALE 2:1 圖 數 SHEET 2/3 更 改 REV E

更改 REV	變更內容 MODIFICATION
A	ECN01432
B	ECN02299
C	ECN03975
D	ECN04006
E	ECN12586

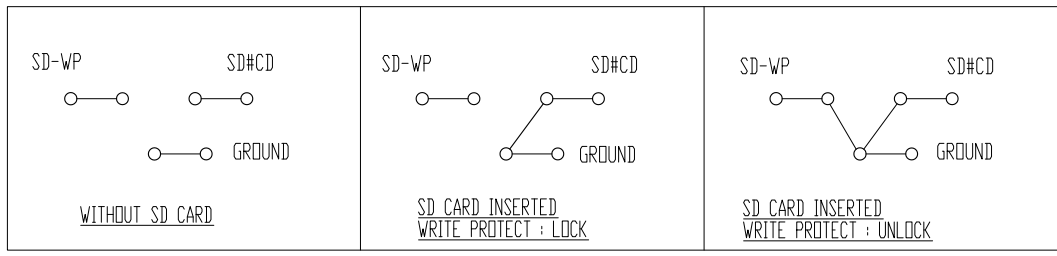


PIN NO.	PIN DEF.
SD#1	SD- DAT3
SD#2	CMD
SD#3	VSS
SD#4	VDD
SD#5	CLK
SD#6	VSS
SD#7	DAT0
SD#8	DAT1
SD#9	DAT2
SD#CD	SD- CD



PCB LAYOUT
(ALL TOLERANCE ARE ±0.05)

SD CIRCUIT :



GENERAL TOLERANCE		KINGCONN 皇海科技股份有限公司	
X ± 0.50	X* ± 5°	名 (TITLE) SD CARD PUSH PUSH CONNECTOR	
.X ± 0.25	.X* ± 2°		
.XX ± 0.15	.XX* ± 1°		
單位 (UNIT) MM	料號 (PART NO.) 7SDCN-B0-1X14	圖號 (DWG NO.) 7SDCN-B0-1X14	比例 (SCALE) 2:1
審核 (APPROVAL)	核對 (CHECKED)	製圖 (DRAWN)	張數 (SHEET) 3/3
			修改 (REV) E