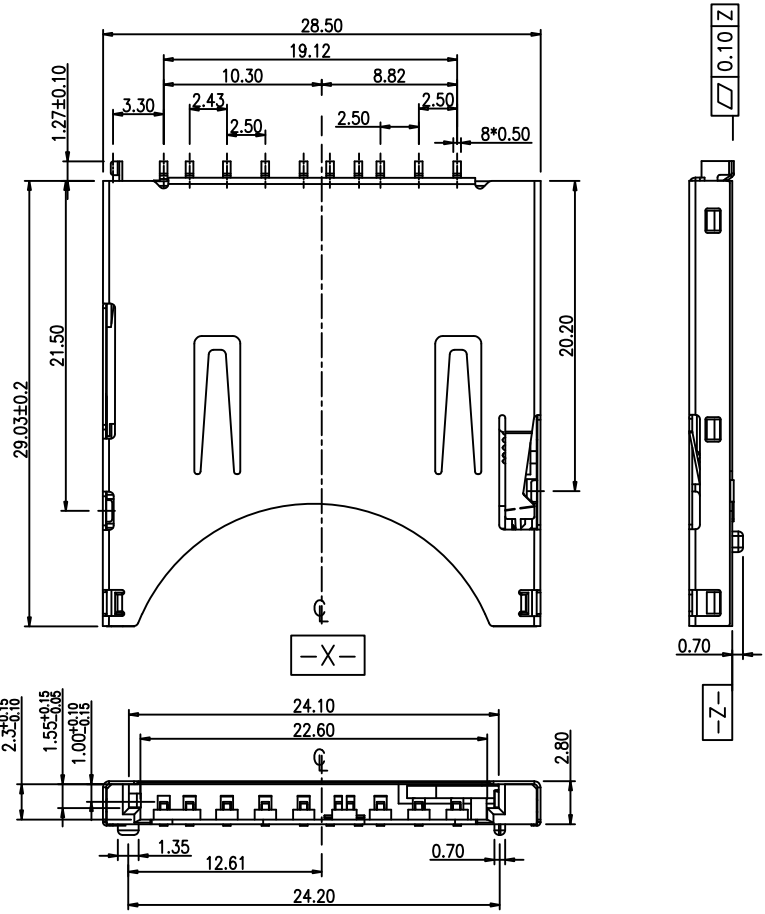


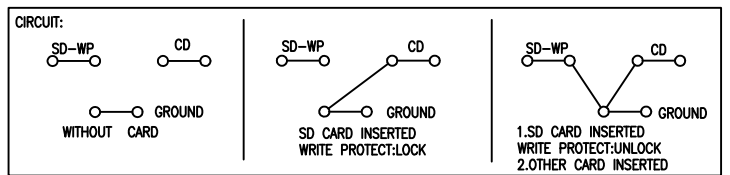
更改 REV	變更內容 MODIFICATION
A	ECN04003
B	ECN04007
C	ECN04208
D	ECN04211
E	ECN04224



Specification

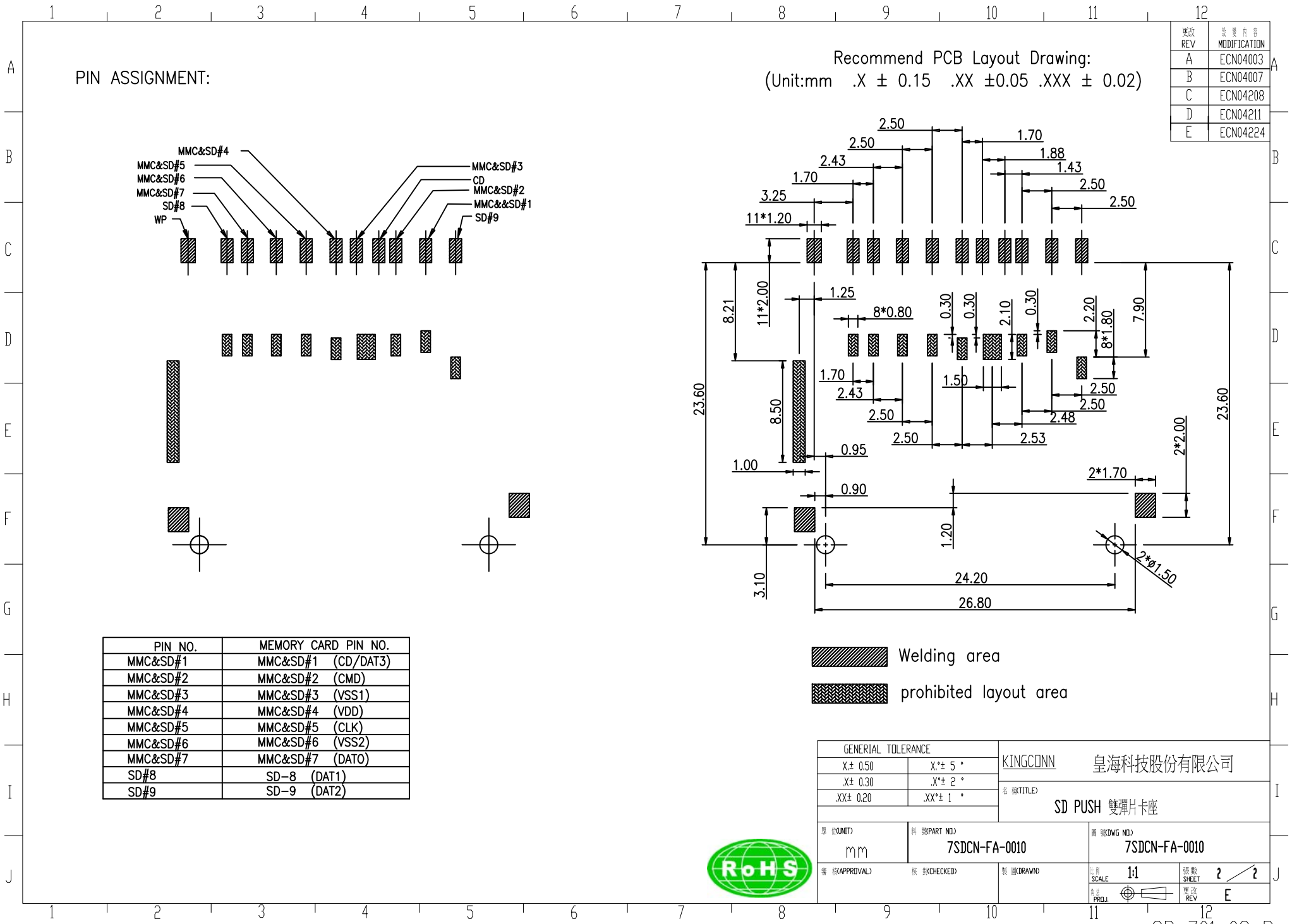
MATERIAL:
 Insulator: High Temperature Thermoplastic, UL 94V-0.
 Contact: Copper Alloy

Electrical:
 Current Rating :0.5mA AC/DC max.
 Voltage Rating :12V AC/DC
 Ambient Temperature Range :-20°C~+60°C
 Storage Temperature Range :-40°C~+70°C
 Ambient Humidity Range :95% R.H. Max.
 Contact Resistance:100m Ω max.
 Insulation Resistance:1000M min./500VDC
 Mating Cycles:5,000 Insertions
 Usable Memory Card: SD&MMC Card



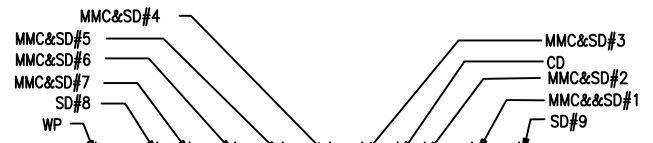
GENERAL TOLERANCE		KINGCONN 皇海科技股份有限公司	
X± 0.50	X*± 5°	名 (TITLE) SD PUSH 雙彈片卡座	
X± 0.30	X*± 2°		
.XX± 0.20	.XX*± 1°		
單位(UNIT) mm	料號(PART NO.) 7SDCN-FA-0010	圖號(DWG NO.) 7SDCN-FA-0010	比例 SCALE 1:1
審核(APPROVAL)	檢查(CHECKED)	製圖(DRAWN)	張數 SHEET 1 / 2
			更改 REV E





更改 REV	修改内容 MODIFICATION
A	ECN04003
B	ECN04007
C	ECN04208
D	ECN04211
E	ECN04224

PIN ASSIGNMENT:



Recommend PCB Layout Drawing:
(Unit:mm .X ± 0.15 .XX ± 0.05 .XXX ± 0.02)

PIN NO.	MEMORY CARD PIN NO.
MMC&SD#1	MMC&SD#1 (CD/DAT3)
MMC&SD#2	MMC&SD#2 (CMD)
MMC&SD#3	MMC&SD#3 (VSS1)
MMC&SD#4	MMC&SD#4 (VDD)
MMC&SD#5	MMC&SD#5 (CLK)
MMC&SD#6	MMC&SD#6 (VSS2)
MMC&SD#7	MMC&SD#7 (DAT0)
SD#8	SD-8 (DAT1)
SD#9	SD-9 (DAT2)

Welding area
 prohibited layout area

GENERAL TOLERANCE		KINGCONN 皇海科技股份有限公司	
X ± 0.50	X* ± 5°	名 稱(TITLE) SD PUSH 雙彈片卡座	
.X ± 0.30	.X* ± 2°		
.XX ± 0.20	.XX* ± 1°		
單 位(UNIT) mm	料 號(PART NO.) 7SDCN-FA-0010	圖 號(DWG NO.) 7SDCN-FA-0010	
審 核(APPROVAL)	檢 查(CHECKED)	製 圖(DRAWN)	比 例 SCALE 1:1
			張 數 SHEET 2 / 2
			版 次 REV E

