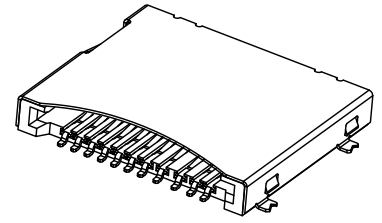
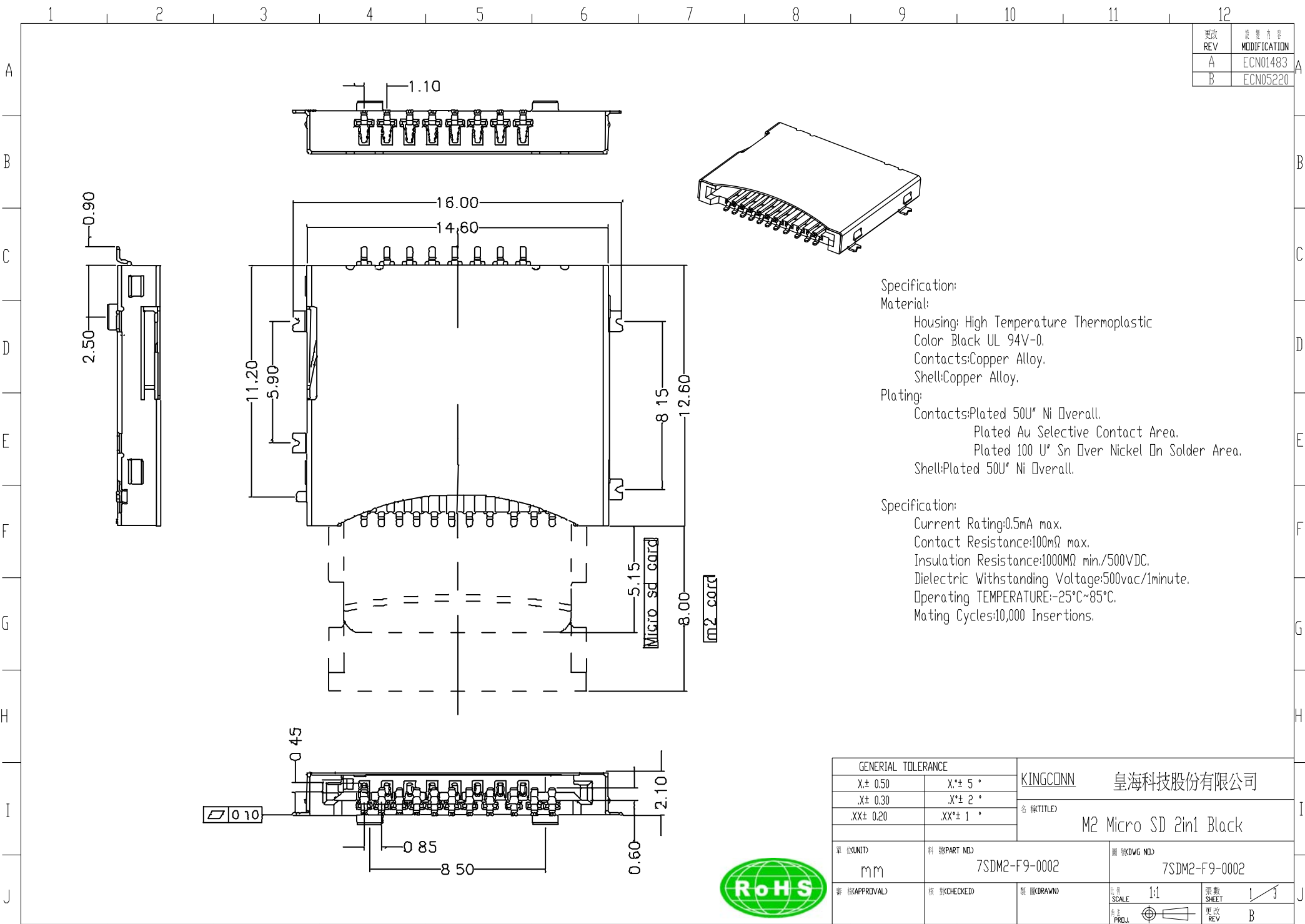


更改 REV	变更记录 MODIFICATION
A	ECN01483
B	ECN05220



Specification:
Material:
Housing: High Temperature Thermoplastic
Color: Black UL 94V-0.
Contacts: Copper Alloy.
Shell: Copper Alloy.
Plating:
Contacts: Plated 50U" Ni Overall.
Plated Au Selective Contact Area.
Plated 100 U" Sn Over Nickel On Solder Area.
Shell: Plated 50U" Ni Overall.

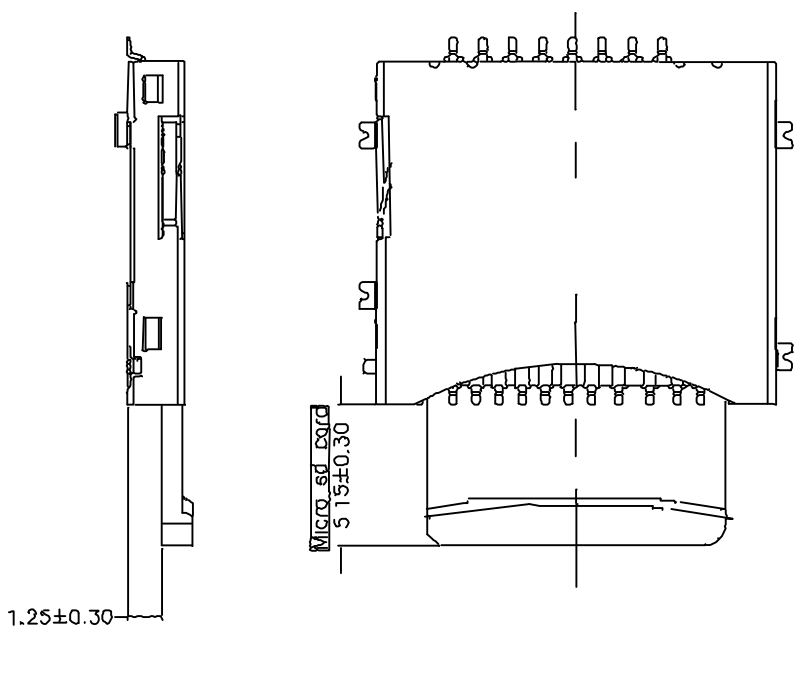
Specification:
Current Rating: 0.5mA max.
Contact Resistance: 100mΩ max.
Insulation Resistance: 1000MΩ min./500VDC.
Dielectric Withstanding Voltage: 500vac/1minute.
Operating TEMPERATURE: -25°C~85°C.
Mating Cycles: 10,000 Insertions.

GENERAL TOLERANCE		KINGCONN 皇海科技股份有限公司	
X± 0.50	X*± 5°	名 稱(TITLE) M2 Micro SD 2in1 Black	
.X± 0.30	.X*± 2°		
.XX± 0.20	.XX*± 1°		
單位(UNIT) mm	料 號(PART NO.) 7SDM2-F9-0002	圖 號(DWG NO.) 7SDM2-F9-0002	
審 核(APPROVAL)	核 對(CHECKED)	製 圖(DRAWN)	比例 SCALE 1:1 張數 SHEET 1/3 更改 REV B

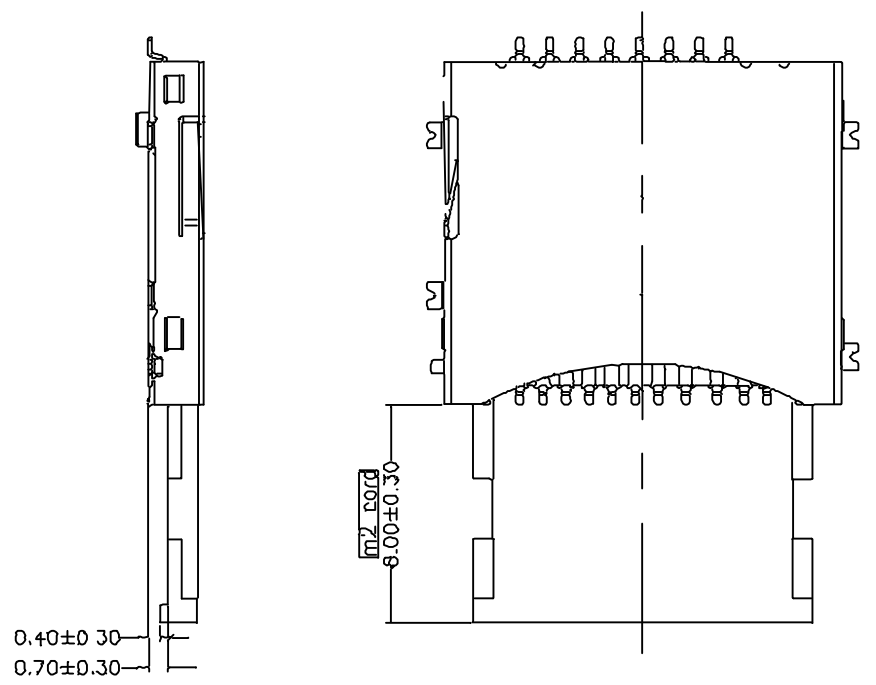


更改 REV	修改内容 MODIFICATION
A	ECN01483
B	ECN05220

Micro SD Card Insert Drawing:



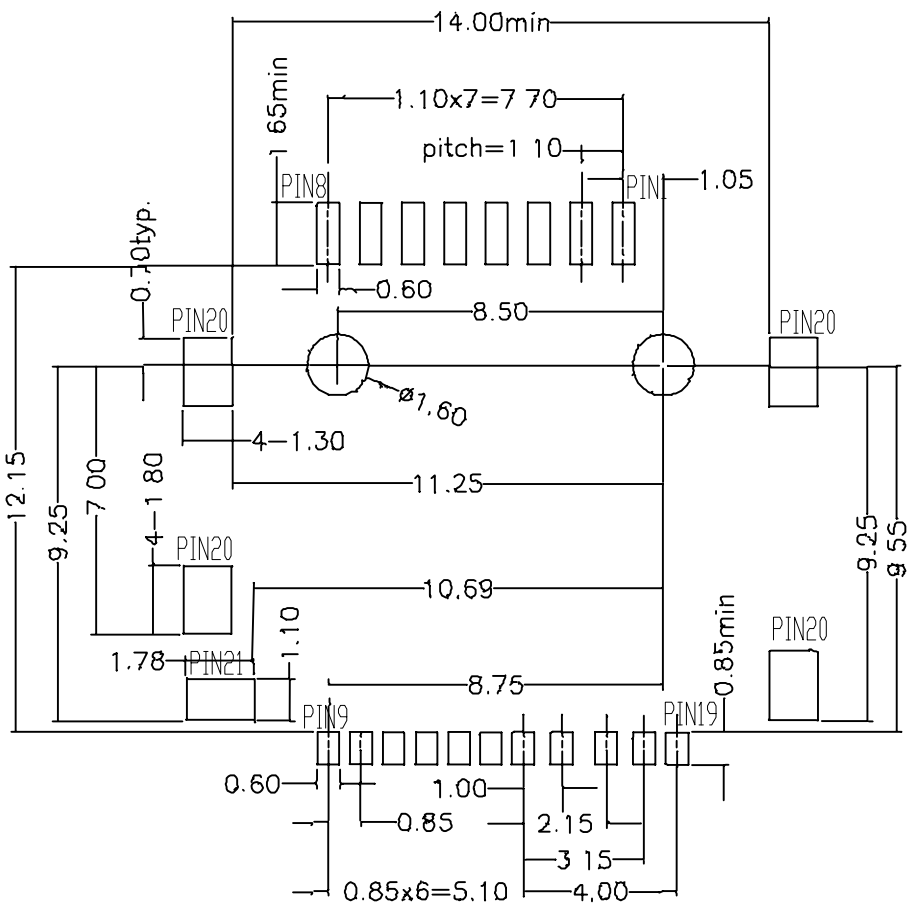
M2 Card Insert Drawing:



GENERAL TOLERANCE		KINGCONN 皇海科技股份有限公司	
X± 0.50	X°± 5°	名 稱(TITLE) M2 Micro SD 2in1 Black	
.X± 0.30	.X°± 2°		
.XX± 0.20	.XX°± 1°		
單位(UNIT) mm	料號(PART NO.) 7SDM2-F9-0002	圖號(DWG NO.) 7SDM2-F9-0002	
審核(APPROVAL)	檢核(CHECKED)	製圖(DRAWN)	比例 SCALE 1:1
			張數 SHEET 2/3
			更改 REV B

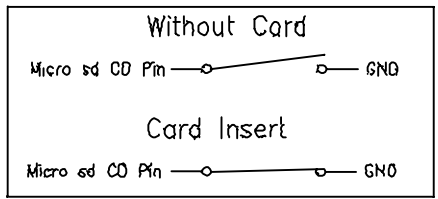


更改 REV	最 后 为 准 MODIFICATION
A	ECN01483
B	ECN05220



pin NO.	Description	pin NO.	Description
01	Micro-SD_DAT2	13	M2_INS
02	Micro-SD_CD/DAT3	14	M2_DATA3
03	Micro-SD_CMD	15	M2_SCLK
04	Micro-SD_VDD	16	M2_VCC
05	Micro-SD_CLK	17	M2_GSS
06	Micro-SD_VSS	18	M2_RESERVED
07	Micro-SD_DAT0	19	M2_RESERVED
08	Micro-SD_DAT1	20	GND
09	M2_BS	21	Micro SD C/D Pin
10	M2_DATA1		
11	M2_DATA0		
12	M2_DATA2		

PCB LAYOUT Micro sd Card Insert



GENERAL TOLERANCE		KINGCONN 皇海科技股份有限公司
X± 0.50	X°± 5°	
.X± 0.30	.X°± 2°	
.XX± 0.20	.XX°± 1°	名 称(TITLE) M2 Micro SD 2in1 Black
单 位(UNIT) mm	料 号(PART NO.) 7SDM2-F9-0002	图 号(DWG NO.) 7SDM2-F9-0002
审 核(APPROVAL)	核 对(CHECKED)	制 图(DRAWN)
		比 例 SCALE 1:1
		张 数 SHEET 3/3
		图 号 REV B

