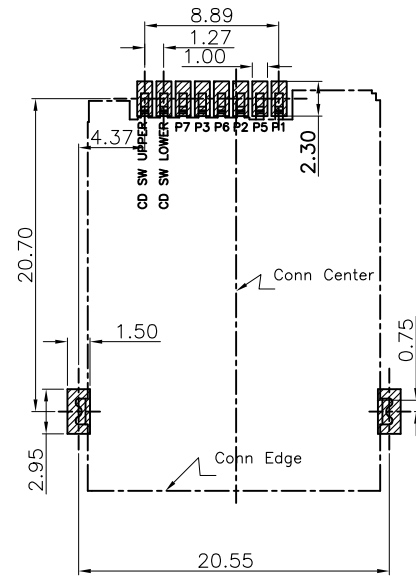
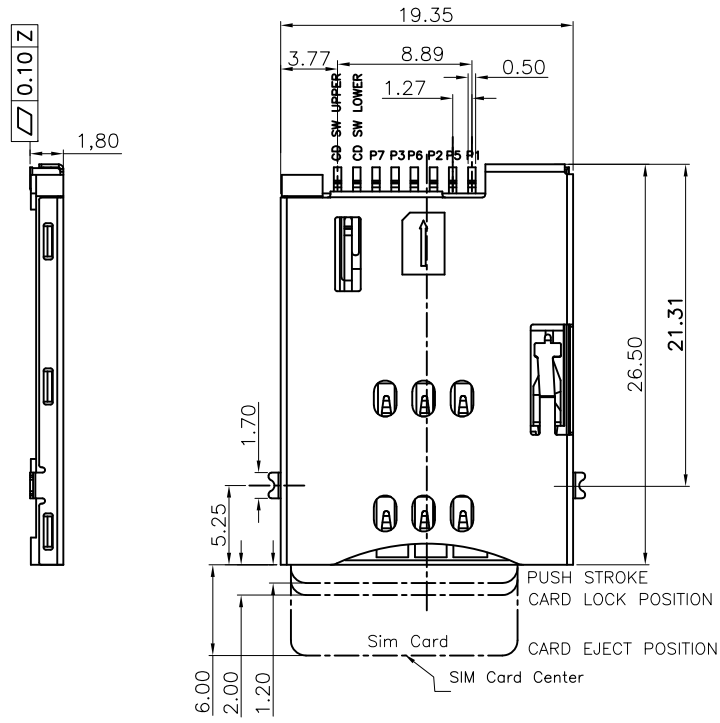
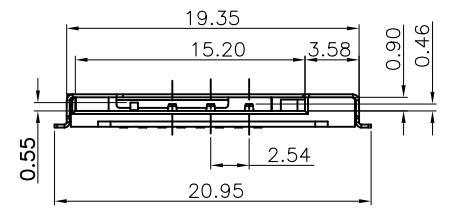


更改 REV	变更内容 MODIFICATION
A	ECXXXXX

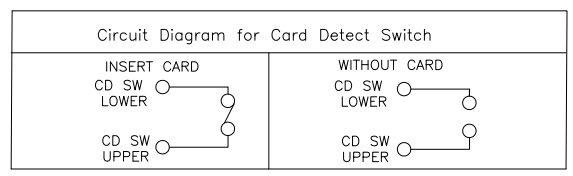


Specification:

- *Electrical Characteristics:
Current Rating;0.5A.
Withstanding Voltage:AC500V r.m.s.
Insulation Resistance:1000Megohms Minimum at DC 500V
Contact Resistance:100Miliohms Maximum.
- *Mechanical Characteristics:
Mating Cycles:5000 Insertions.
- *Environmwntal:
Operating Temperature:-40°To+85°
- *Material:
1.Housing:HI-Temp plastic UL 94V-0 Rated.
2.Contact:Copper Alloy.
3.Shell:SUS.



CONNECTOR TERMINAL NO	PIN NO
PIN 1	VCC:PWR SIGNAL AND GND
PIN 2	RST:RESET SIGNAL
PIN 3	CLK:CLOCKING SIGNAL
PIN 5	GND:PWR SIGNAL AND GND
PIN 6	VPP:PROGRAMMING VOLTAGE
PIN 7	I/O:SERIAL DATA INPUT/OUTPUT



GENERAL TOLERANCE		KINGCONN 皇海科技股份有限公司	
X,± 0.50	X,*± 5 °	名 称(TITLE) SIM CARD PUSH PUSH (6+2PIN) H=1.8mm	
.X± 0.30	.X*± 2 °		
.XX± 0.20	.XX*± 1 °		
单 位(UNIT)	料 号(PART NO.)	图 号(DWG NO.)	
mm	7SIMC-FA-0006	7SIMC-FA-0006	
审 核(APPROVAL)	核 对(CHECKED)	制 图(DRAWN)	张 数(SHEET) 1 / 1
			更 改(REV) A

