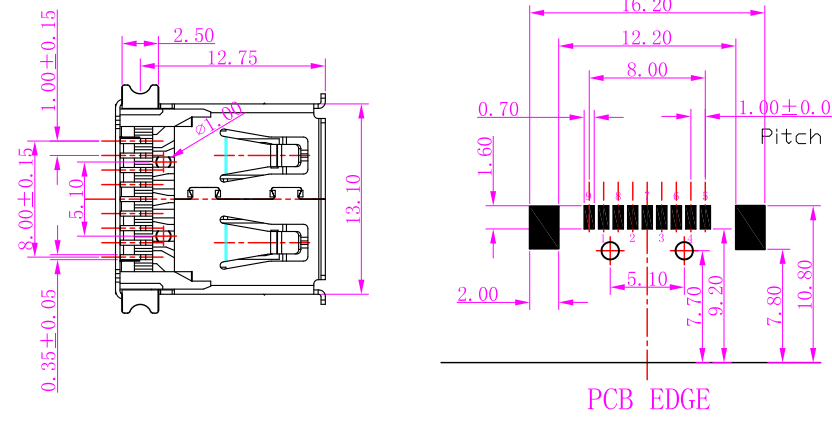
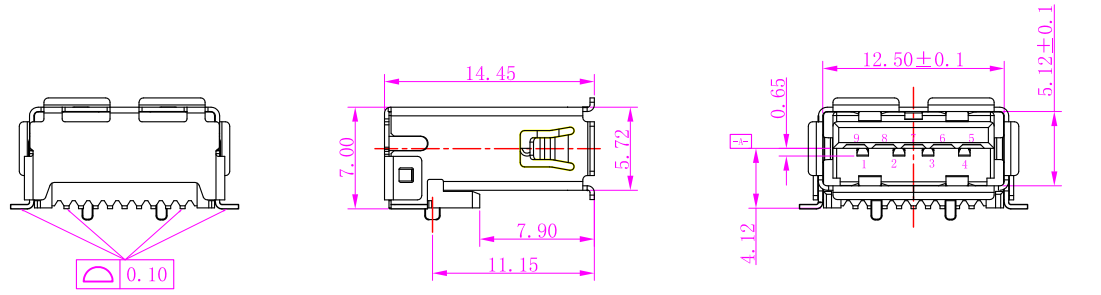
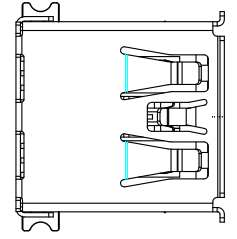


更改 REV	變更內容 MODIFICATION
A	ECXXXX



PCB EDGE  
RECOMMENDED PCB LAYOUT

Pin NUMBER	SIGNAL NAME
1	VBUS
2	D-
3	D+
4	GND
5	StdA_SSRX-
6	StdA_SSRX+
7	GND_DRAIN
8	StdA_SSTX-
9	StdA_SSTX+
Shell	Shield



NOTE:

- MATERIAL:
  - INSULATOR:LCP UL 94V-0
  - CONTACT:BRONZE (T=0.20mm)
  - SHELL:BRASS (T=0.30mm)
- ELECTRICAL CHARACTERISTICS:
  - CONTACT RESISTANCE:30mΩ MAXIMUM
  - CONTACT CURRENT RATING:1.5A
  - DIELECTRIC WITHSTANDING VOLTAGE:500 V R. M. S.
  - INSULATION RESISTANCE 1000 MEGOHMS MIN
  - OPERATING TEMPERATURE:-40° C ~ 85° C
- MECHANICAL CHARACTERISTICS:
  - MATING FORCE:3.57kg MAX
  - UNMATED FORCE:1.02kg MIN
  - DURABILITY:MANDATORY:5,000 CYCLES
- PLATING
  - TERMINAL:
    - 50u" MIN NICKEL ALL OVER
    - 100u"MIN Tin ON SOLDER AREA
    - (1~30)u"Au ON CONTACT AREA
  - SHELL:100u"MIN. NICEL ALL OVER



GENERAL TOLERANCE		KINGCONN 皇海科技股份有限公司	
X± 0.50	X*± 5°	名稱(TITLE) USB 3.0 AF SMT有卷邊	
.X± 0.30	.X*± 2°		
.XX± 0.20	.XX*± 1°		
單位(UNIT) mm	料號(PART NO.) 7USB3-F0-0026	圖號(DWG NO.) 7USB3-F0-0026	
審核(APPROVAL)	核對(CHECKED)	製圖(DRAWN)	比例(SCALE) 1:1 張數(SHEET) 1/1 圖號(REV) A