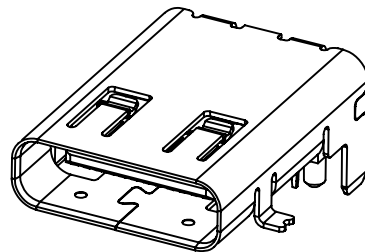
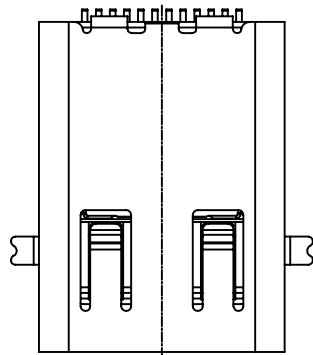
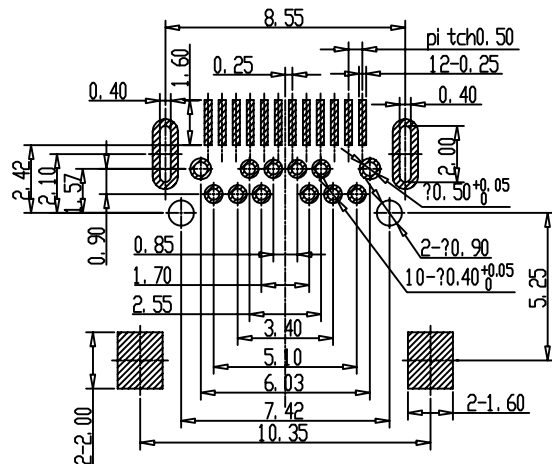


更改 REV	变更记录 MODIFICATION
A	ECXXXX



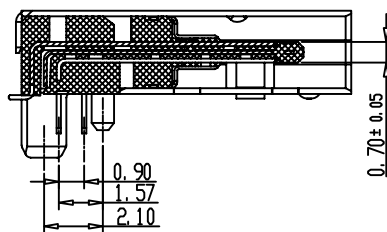
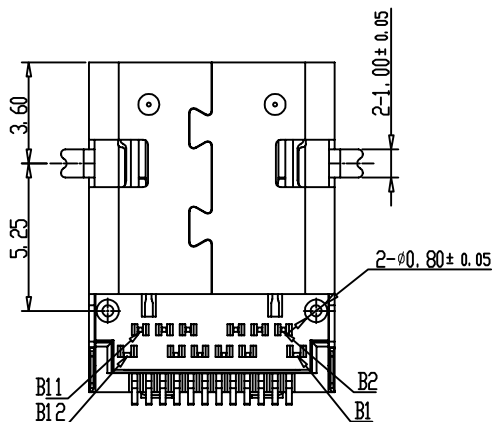
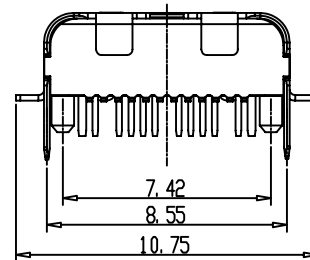
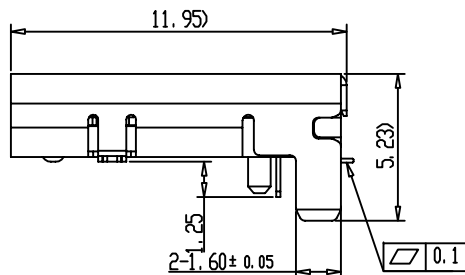
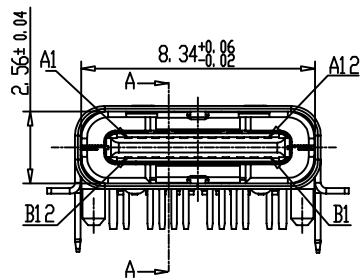
3D VIEW



RECOMMENDED PCB LAYOUT TOP VIEW
DEFAULT TOLERANCE: ± 0.05

NOTES:

- MATERIAL:
 - HOUSING: LCP UL94 V-0
 - CONTACT: COPPER ALLOY
 - SHELL: STAINLESS STEEL
- FINISH:
 - CONTACT: Au 30μ Min. ON CONTACT AREA; MATTE TIN PLATING ON SOLDER TAIL; Ni ALL OVER;
 - SHELL: SOLDERABILITY Ni PLATING OVER ALL;
- ELECTRICAL:
 - INSULATION RESISTANCE: 100 MEGOHMS MIN.
 - DIELECTRIC WITHSTANDING VOLTAGE: 100VAC MIN.
 - LOW LEVEL CONTACT RESISTANCE: INITIAL 40mΩ MAX. AFTER 50mΩ MAX.
- MECHANICAL CHARACTERISTICS:
 - MATING FORCE: 5~20N?
 - UNMATING FORCE: 8~20N INITIAL, 6~20N AFTER 10000 CYCLES;
 - DURABILITY: 10,000 MATING CYCLES.
 - OPERATING TEMPERATURE: -40° C TO +80° C



SECTION A-A

PIN ASSIGNMENTS:

A1	A2	A3	A4	A5	A6	A7	A8	A9	A10	A11	A12
GND	TX1+	TX1-	Vbus	CC1	D+	D-	SBU1	Vbus	RX2-	RX2+	GND
B12	B11	B10	B9	B8	B7	B6	B5	B4	B3	B2	B1
GND	RX1+	RX1-	Vbus	SBU2	D-	D+	CC2	Vbus	TX2-	TX2+	GND

GENERAL TOLERANCE		KINGCONN 皇海科技股份有限公司	
X± 0.50	X*± 5°	TYPE C 24PIN SMT+DIP FOR 40G 30U*	
.X± 0.30	.X*± 2°		
.XX± 0.20	.XX*± 1°		
UNIT (UNIT)	PART NO. (PART NO.)	DWG NO. (DWG NO.)	
mm	7USB31-E0-4001	7USB31-E0-4001	
APPROVAL (APPROVAL)	CHECKED (CHECKED)	DRAWN (DRAWN)	SCALE (SCALE) 1:1
			SHEET (SHEET) 1/1
			REV (REV) A

