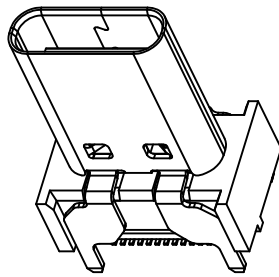
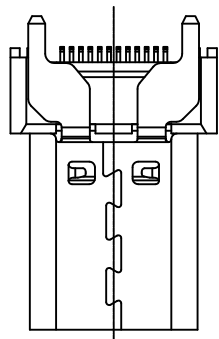
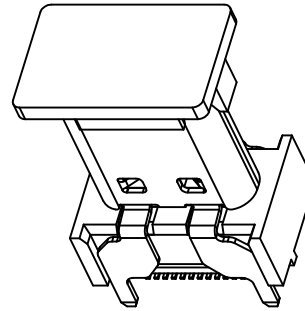


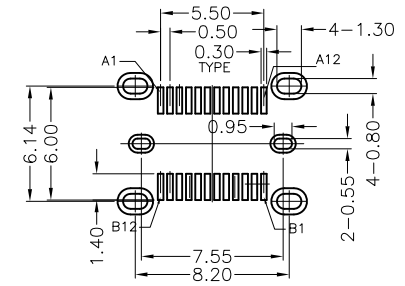
更改 REV	修改内容 MODIFICATION	日期 DATE
A	ECXXXXX	



WITHOUT COVER



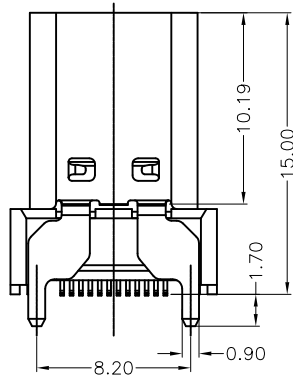
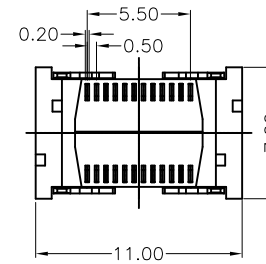
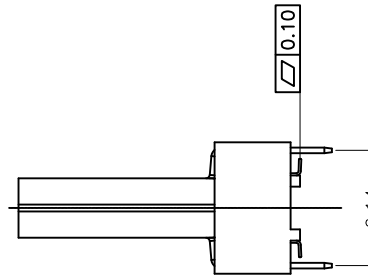
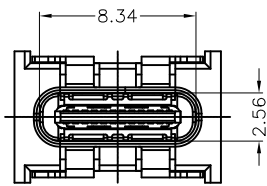
WITH COVER



RECOMMEND P.C.B LAYOUT (COMPONENT SIDE)

TOLERANCE FOR PCB LAYOUT IS  $\pm 0.05$

KEEP OUT AREA



1. Contact Resistance: 40mOHM Max.;
2. Dielectric Withstanding Voltage: 100V AC For 1 Minute;
3. Insulation Resistance: 100M OHM Min.;
4. Mating And Unmating Force:  
Mating Force: 5~20N  
Unmating Force: 8~20N(0~1000cycle);  
6~20N(1001~10000cycle);
5. Durability: 10000 Cycles;
6. Plating: Ni30u", Au1u"

GENERAL TOLERANCE		KINGCONN 皇海科技股份有限公司
X $\pm$ 0.50	X. $^{\circ}$ $\pm$ 5 $^{\circ}$	
.X $\pm$ 0.30	.X. $^{\circ}$ $\pm$ 2 $^{\circ}$	
.XX $\pm$ 0.20	.XX. $^{\circ}$ $\pm$ 1 $^{\circ}$	名 称(TITLE) USB 3.1 TYPE C FEMALE VERTICAL H15.0MM SMT TYPE
单 位(UNIT)	料 号(PART NO.)	图 号(DWG NO.)
mm	7USB31-F0-0030	7USB31-F0-0030-A
审 核(APPROVAL)	核 对(CHECKED)	制 图(DRAWN)
		比 例 SCALE 1:1
		图 号 SHEET 1/1
		版 次 REV A

