

更改 REV	版本号 MODIFICATION
A	EC07177
B	EC12623

Notes:

Specations:

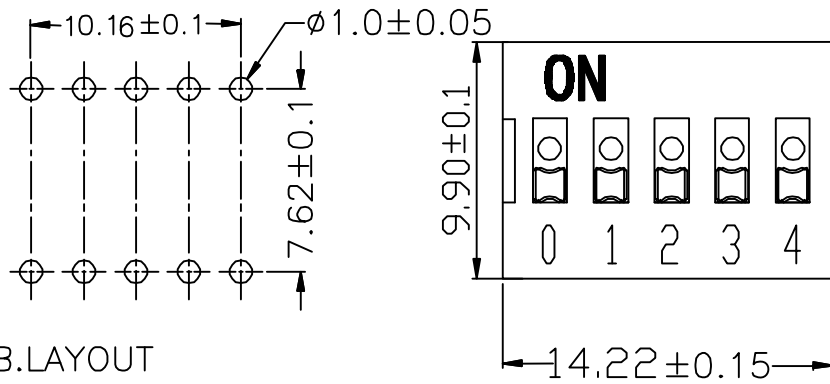
- 1>Operating force:8N Max.
- 2>Operating temperature:-40° C~+125° C.
- 3>storage temperature:-40° C~+125° C.
- 4>Electrical life:2000 times under voltage 24VDC and current 25mA.

Electrical characteristics:

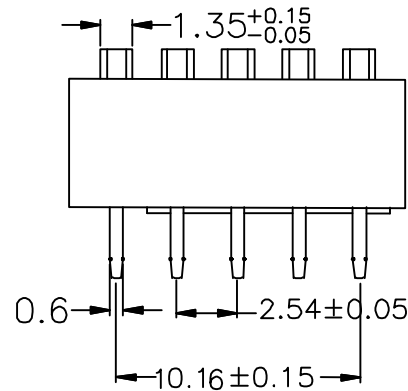
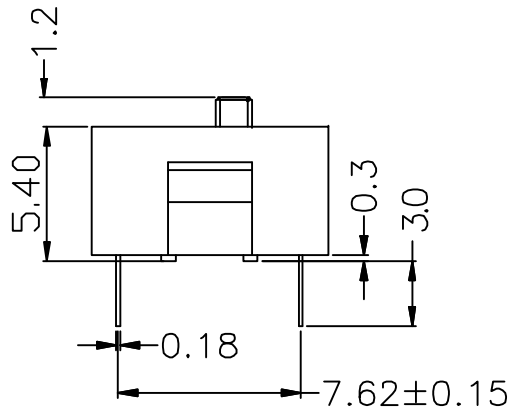
- 1) Electrical life: Each switch is tested under a voltage of 24VDC and a current of 25mA, and can be flipped back and forth 2,000 times.
- 2) Rated current for infrequent switching of the switch: 100mA, withstand voltage 50VDC.
- 3) The rated current of the switch frequently switched: 25mA, withstand voltage 24VDC.
- 4) Contact impedance: The initial value is maximum 50mΩ, and the maximum value after testing is 100mΩ.
- 5) Insulation impedance: minimum 100mΩ, 500VDC.
- 6) Compressive strength: 500VAC/1 minute.
- 7) Loop: single contact single selection.

Welding and cleaning process:

- 1) During all operations, please ensure that the switch is in the "off" position.
- 2) Wave soldering: The recommended dry tin temperature is 250±5° C for 3~5 seconds.
- 3) Hand welding: Use a 30-watt soldering iron to control the temperature at 320° C, and the welding time is about 2 seconds.
- 4) Cleaning process: The ultrasonic method is used for cleaning, which can give better results. When using the steam method, the temperature should not exceed 51° C.

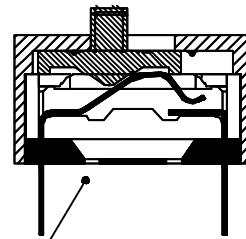


P.C.B.LAYOUT



*MATERIAL

Part Name	Material	Finished
Base	HIGH TEMPERATURE RESISTANT PLASTIC, UL94 -0	-
Cover		-
Actuator		-
Terminal Contact	Brass	Gold



G:Convex bottom



GENERAL TOLERANCE		KINGCONN 皇海科技股份有限公司	
X± 0.50	X*± 5°	名 称(TITLE) DIP SWITCH '01234' 5PDS	
.X± 0.30	.X*± 2°		
.XX± 0.20	.XX*± 1°		
单 位(UNIT) mm	料 号(PART NO.) 7WHTe-F0-GL67-05-L	图 号(DWG NO.) 7WHTe-F0-GL67-05-L	
审 核(APPROVAL)	核 对(CHECKED)	製 图(DRAWN)	比 例 SCALE 1:1 图 数 SHEET 1/1 版 次 REV B